

Twitter
App.



Revolutionising digital interaction.

Contents.

Introduction.....	3
Uses.....	3
Adding the app to your project.....	3
Understanding the App Options.....	5
Preview Panel.....	5
Areas Tab.....	Error! Bookmark not defined.
Triggers Tab.....	Error! Bookmark not defined.
Setup Tab.....	Error! Bookmark not defined.
Storage Tab.....	Error! Bookmark not defined.
Licencing apps.....	6

Introduction.

If your company has a Twitter profile this App will retrieve and display twitter feeds connected to that profile. The app will regularly check for new feeds and publish them live (as and when they are 'tweeted') or update them at regular intervals. The app also includes advanced functionality like being able to control the system through special commands that are 'tweeted', such as jumping to a page or playing a specific media files. The app can also follow and publish a unique hashtag rather than a profile so that updates can me made simply by including the hashtag within a comment. You can also prevent post that that may include obscenities or indecent content from being published.

Uses.

A Twitter feed contains the tweets from a Twitter account timeline or a search. The feed data (text and media) can be shown in your Acquire projects by selecting the feed as the External Source of a page item or by using an Acquire System Variable. See *Appendix 1* for more information.

Feeds can be streamed (accessed live) or polled at regular intervals.

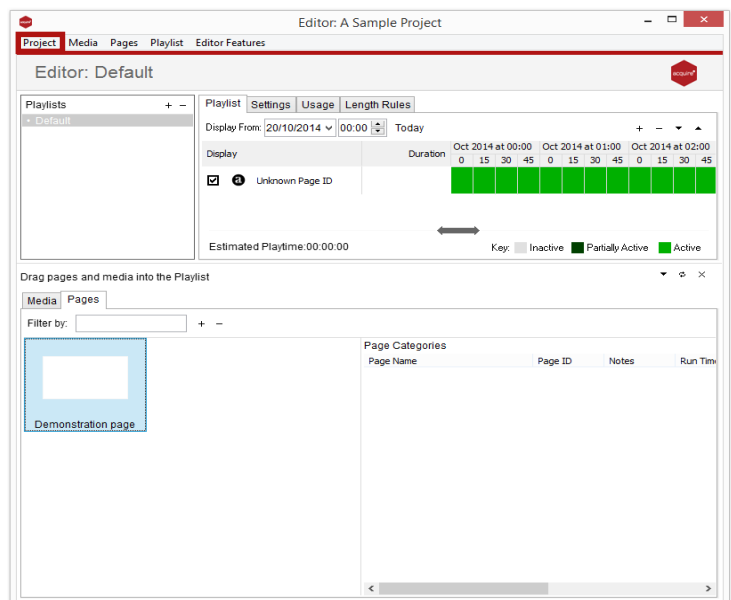
You can control your project by tweeting special commands. Simply define Control Tags (command words found in a tweet) to perform special actions, such as jumping to a specified page.

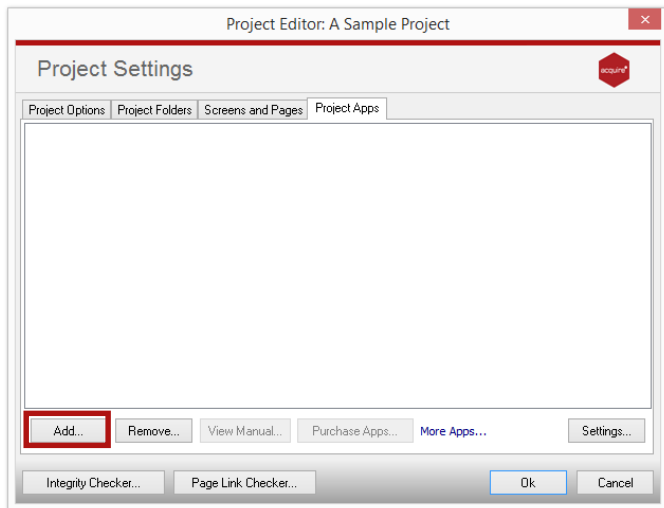
Note This app only reads tweets. It *does not* write, alter or delete your tweets.

Note Twitter imposes certain rate restrictions on how many connections can be made to an account. See *Appendix 2* for more information.

Adding the app to your project.

From the Project Editor window navigate to the 'Project' tab and select 'Settings' from the drop down menu.





In the Project Settings go to the 'Project Apps' tab and click the add button as shown.

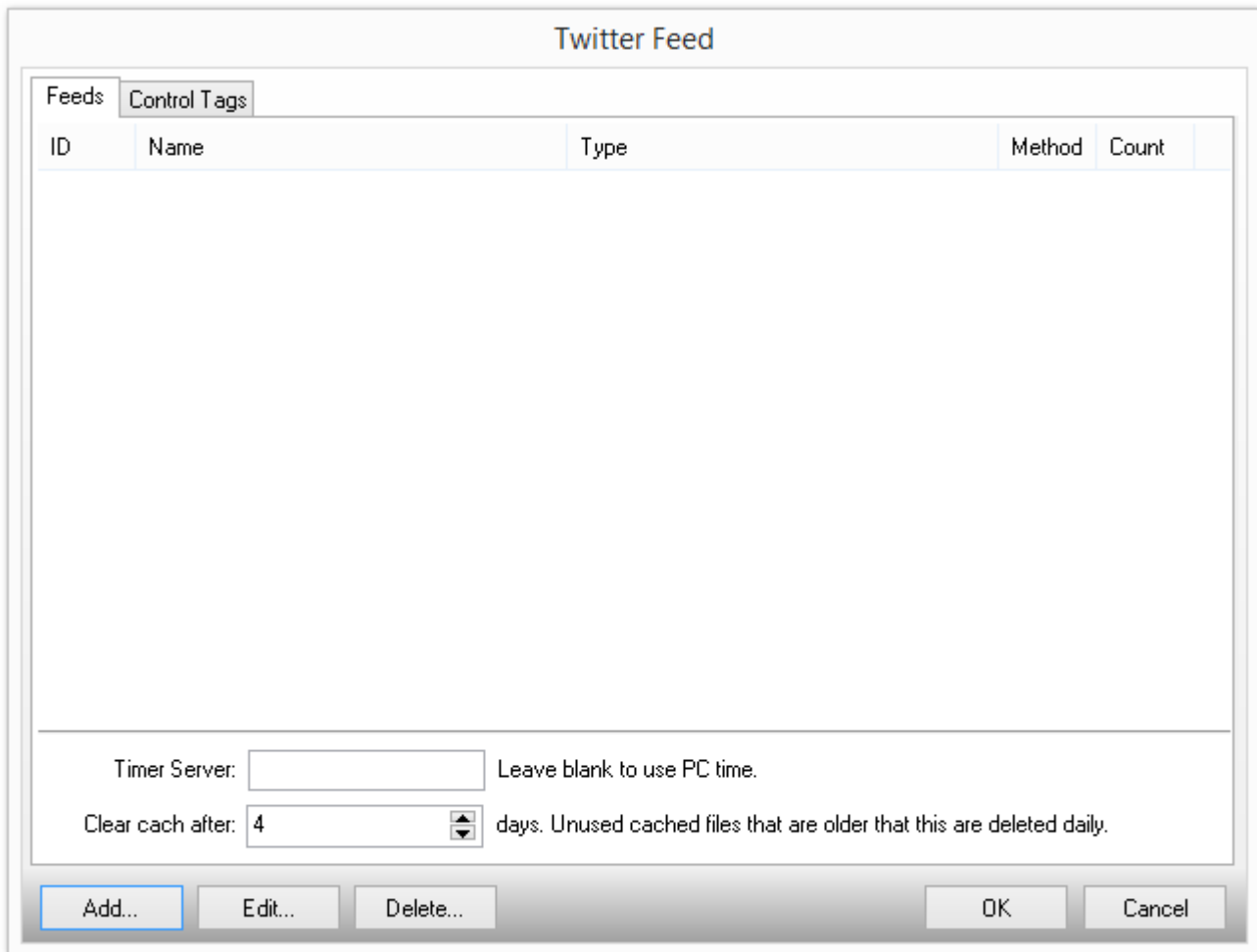
Select the app from the list.

Tip: Unlicensed apps will be greyed out and can only be used during your 30 day trial.

For more information about licencing apps go to [Licencing apps](#).

Understanding the App Options.

This is the settings window. It consists of a preview panel and settings tabs.



Preview Panel.

This panel provides an overview of your feeds. Each feed is a different Twitter account that the app connects to and monitors for Tweets. You can double-click a feed to edit it.

Time Server

In order to establish a connection with Twitter the correct standard internet time (Network Time Protocol) must be used. This can be obtained from a Time Server such as *pool.ntp.org*.

If you are sure that your player will have the correct system time you may leave this blank.

Clear Cache

Feed data such as profile images and tweet media is cached to disk. Files that are have not been used for longer than the number of days specified here will be deleted daily.

Adding a Feed.

Each feed consists of connection details to a Twitter account and settings for what type of tweets to extract etc. A twitter account must allow this app to access it.

Press Add to begin the following authentication process:

1. Your default web browser will open asking you to log into your Twitter account.
2. The app will open a window asking for a PIN number.
3. Use the browser to log in to Twitter and authorize the app to access your account.
A PIN number will be generated.
4. Enter the Twitter PIN into the app window and press OK. A new feed will added to the Feeds List.

Configuring a feed

Select a feed and press Edit or double-click the feed to show the Feed Settings window.

The screenshot shows the 'Twitter Feed' window with a 'Feed Settings' header. The window is divided into three main sections: 'Feed', 'Tweets', and 'Filters'. Numbered callouts point to various elements:

- 1: Points to the 'Name' field, which contains 'My Twitter Account'.
- 2: Points to the 'ID' field, which contains '1'.
- 3: Points to the 'Monitor Type' dropdown menu, which is set to 'Stream'.
- 4: Points to the 'Tweet Type' dropdown menu, which is set to 'Home Timeline (all tweets on user's timeline)'.
- 5: Points to the 'Make Title From' dropdown menu, which is set to 'Name and Screen Name'.
- 6: Points to the 'Get Media From' dropdown menu, which is set to 'Tweet media if exists, otherwise use Profile im'.
- 7: Points to the 'Maximum Tweets' spinner, which is set to '10'.
- 8: Points to the 'Process Control Tags in Tweets' checkbox, which is checked.
- 9: Points to the 'Refresh current page on each Tweet' checkbox, which is checked.
- 10: Points to the 'Remove links from Text' checkbox, which is checked.
- 11: Points to the 'Filters' section, which includes two text input fields for filtering tweets.

The 'Filters' section contains the following text:

Only include Tweets that contain a word/phrase in this list:

Do not include Tweets that contain a word/phrase in this list:

NOTE: Filters are a list of comma seperated words and phrases

At the bottom of the window are 'OK' and 'Cancel' buttons.

1. Name

The name of your feed. This is just for your reference and be anything you like.

2. ID

The feed ID is automatically generated and is required when using Acquire variables.

See *Appendix 1* for more information.

3. Monitor Type

Select how the app should connect to your account:

Stream This method will open a continuous connection.

Poll This method will connect periodically as set in the adjacent Seconds box.

Note Twitter imposes certain rate restrictions on how many connections can be made to an account. See *Appendix 2*.

4. Tweet Type

Select what tweets to extract from the Twitter account:

Home Timeline Use all tweets on the account's timeline.

User Timeline Use only tweets posted by the account holder.

Search For Use tweets that contain the value in the adjacent box. This can be a #tag or a username etc.

5. Make Title From

Tweets don't have inherent titles. But they can be created for use in Acquire from the elements in the drop down box.

6. Get Media From

Not all tweets contain media. Use this box to determine what should happen if not.

7. Maximum Tweets

The maximum number of tweets that the app keeps in memory. To keep overheads down set this to the maximum number of tweets that you will show at once.

8. Process Control Tags in Tweets

Select this for the app to process Control Tags found in the tweets from this feed.

9. Refresh current page on each Tweet

Select this to reload the current page when a new tweet is posted.

10. Remove links from Text

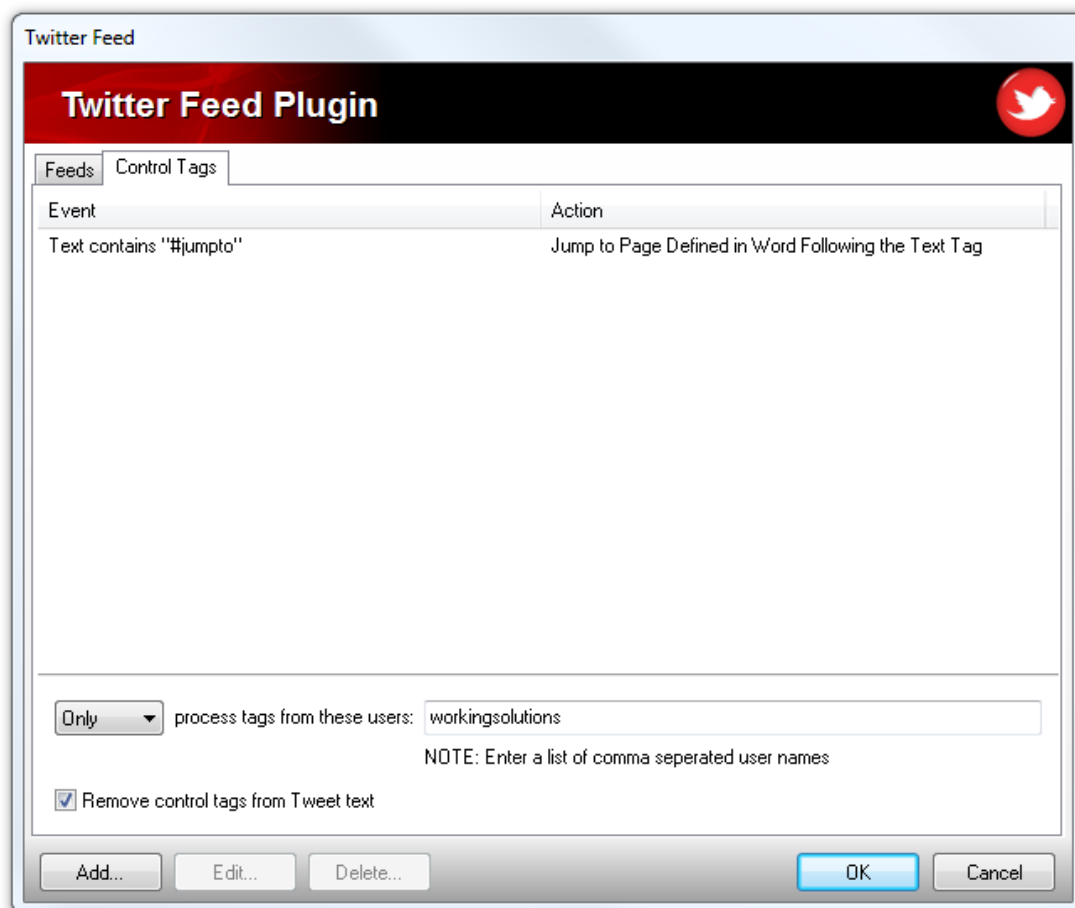
Select this to remove web and media links from the tweet text prior to displaying in Acquire.

11. Filters

Enter lists of comma separated words/phrases. Only tweets that whose text matches these lists will be used. Tweet text, titles and locations are checked. Leave blank to ignore the filter and use all tweets.

Control Tags tab

Control Tags are special command words that the app will look for in tweets. When found a specified action will be performed. This allows you to control your project by tweeting commands.



1. Control Tags list

This is an overview of your Control Tags. Each Control Tag consists of an Event (command words to look for in the tweet text) and an Action (what to do when that Event happens).

2. Enter a list of comma separated user names and select to Only or Never process Control Tags from users in this list. In this way you can restrict who has control over your project.
3. Remove control tags from Tweet text.

Configuring a Control Tag

Press Add, select an existing tag and press Edit or double-click the tag to show the Control Tag settings window.

The screenshot shows a dialog box titled 'Control Tag' with a sub-header 'Edit Control Tag' and a Twitter logo. It contains three main sections: 'Event', 'Action', and 'Ignore further events for'. Three numbered callouts point to these sections: 1 points to the 'Event' section, 2 points to the 'Action' section, and 3 points to the 'Ignore further events for' section.

1 →

2 →

3 →

Control Tag

Edit Control Tag

Event: ☐ Name contains tag
☐ Location contains tag
☒ Text contains tag

Action:

Variable:
Value:

☐ Ignore further events for seconds

1. Events

An event is triggered when a new tweet contains a specified tag word in its Name, Location or Text.

2. Action

When the Event occurs select what Action to perform. Use the boxes below to enter values for the selected Action.

3. Ignore further events for

Use this to prevent another Control Tag from interrupting this Event too early.

Appendix 1 – How to use Twitter Feeds in Acquire

These are two methods to show tweets in Acquire:

1. Put a app or tool on your page that supports feeds and choose External Source for its media.

From the External Source window you can select the Twitter Feed app.

Tip - If you can't see the Twitter Feed app please ensure that you are using the latest version of Acquire.

Select what feed and what story and field to show from that feed.

2. Use the `$$_twitter` Acquire System Variable in text tools etc.

The variable is written in this format `$$_twitter[feedid, tweetindex, element]` where:

feedid is the ID of the feed. This is can be obtained from the Feed List.

tweetindex is the number of the tweet to use. 0 is the latest tweet and 1 is the previous tweet etc.

element is what part of the tweet to use and can be one of the following words:

title	Tweet title
story	Tweet text
mediafile	First media file in tweet
Mediadesc	URL of first media file in tweet
Pubdate	Tweet creation date
author	Name or user who posted the tweet
url or link	First link in tweet
picture	Tweet author's profile picture
picturedesc	URL of tweet author's profile picture
website	Tweet author's Twitter site
profile	Name and Screen Name of the tweet author
location	As tweeted *
tag	Unique ID of the tweet

* This will contain the location selected when tweeted otherwise the user's profile location. Locations must be enabled in the Twitter Account settings.

Example:

`$$_twitter[3, 0, title]`

This would show the title part of the first tweet of the Twitter feed with ID number 3.

Tip - If this method fails please ensure that you are using the latest version of Acquire.

Appendix 2 – Limitations

Twitter only allows clients (e.g. this app) to make a limited number of connection requests in a given hour. This policy affects the connection methods in different ways:

Polling

350 requests per hour are allowed. This roughly equates to one request per 10 seconds. For this reason the Polling period is restricted to a minimum of 15 seconds.

Streaming

Each account may create only one standing connection to the Streaming API. Subsequent connections from the same account may cause previously established connections to be disconnected. Excessive connection attempts, regardless of success, will result in an automatic ban of the client's IP address. Continually failing connections will result in your IP address being blacklisted from all Twitter access.

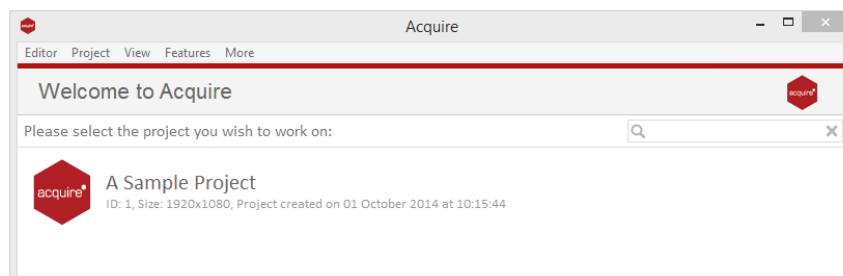
If you think you have been blacklisted, or you need to extend these rates, please contact Twitter.

More information can be found here <https://dev.twitter.com/docs/rate-limiting>

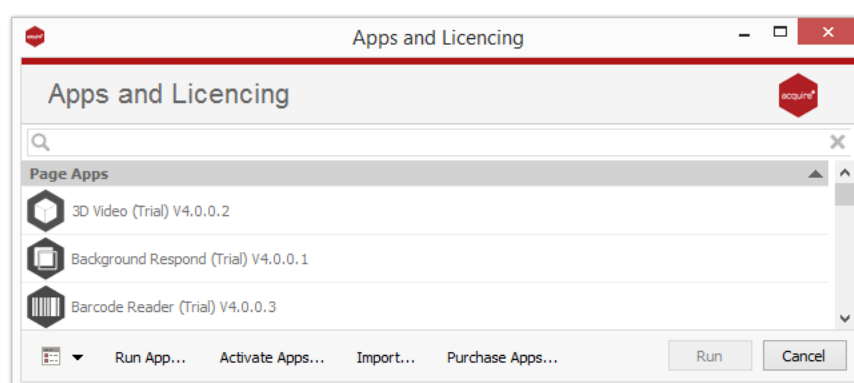
Licencing apps.

On purchasing an app pack you will be provided with a licence key. Save this to your computer.

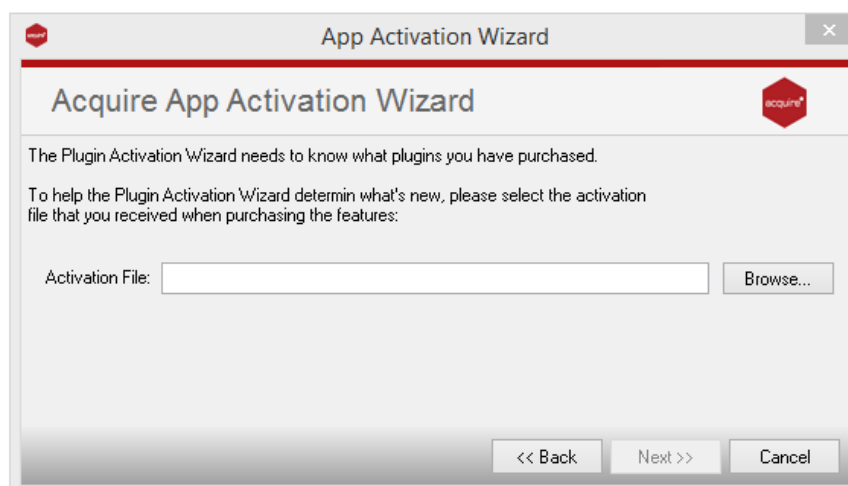
From the main 'Welcome Screen' click on *Editor* and select Apps and Licencing from the drop down menu.



Click *Activate Apps* and follow the onscreen instructions.



Use the 'Browse...' button to locate your saved licence key and follow the instructions to activate.



Your apps should now be activated and can be accessed from the apps list or from within a working project or project page.