



Slide Show Advanced App.



Revolutionising digital interaction.

Contents.

Introduction..... 3

Uses..... 3

Using Slide Show Advanced app. 3

 Slide Show Advanced Configuration – Options tab..... 4

 Slide Show Advanced Configuration – Slides tab..... 5

 Media Folder Playlist..... 5

 MRSS Playlist..... 7

Introduction.

To maximise engagement with your target audience it is important to create pages in provocative and engaging formats. Zoning content allows you to mix adverts with informative content, data feeds and other relevant information.

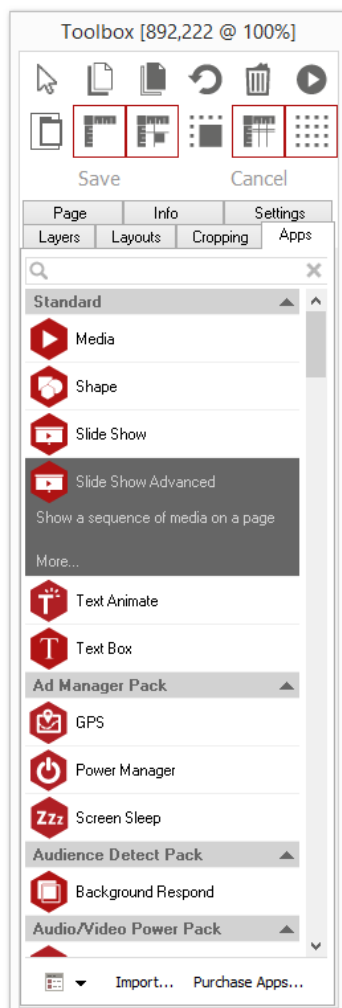
This app enables you to show a sequence of media slides on a page within an Acquire project without the page having to change or reload.

Uses.

Use this app to point to a folder full of media. The app will automatically play the content; switching between media using slow fades, panning and zooming. Slides can also be created from an MRSS feed. This requires the latest RSS app to be included in your project.

Using Slide Show Advanced app.

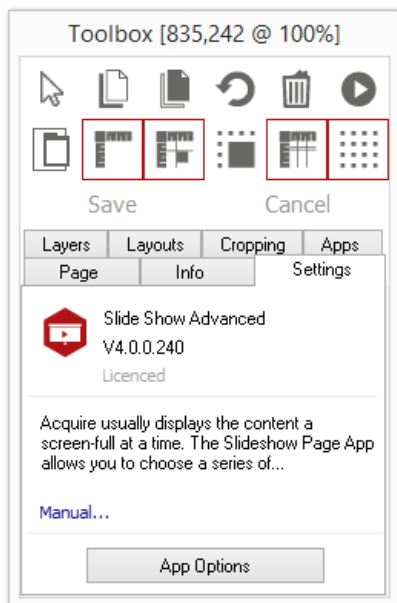
To access the app open an existing or new page and select the 'App' tab of the page editor 'Toolbox' (shown below). This App comes as standard with Acquire V4 and is therefore not sold or licensed separately,



Select the app from the list or search for it using the search bar. When an app is selected it will be highlighted as shown.

Here the Slide Show Advanced app has been selected.

Once you have selected your app draw an area on your page where you would like to use the app. In this case you will be drawing a space where you want your Slide Show to be shown on the page. You can reposition and resize this at any point.



The 'Settings' tab within the Toolbox will automatically open when the app is added to a page.

From here you can set your app up by clicking on the 'App Options' button.

Slide Show Advanced Configuration – Options tab.

1. Select where you want to store your configuration: with the Acquire page or in a separate file.
2. Select whether you want to turn on Seamless Playback. This can only be done if you choose to save your file in Acquire.

Tip: Normally page apps on different pages load their own configuration and restart when their host page is loaded. Seamless playback is a method of playing one Slide Show app, seamlessly, over a number of consecutive pages.

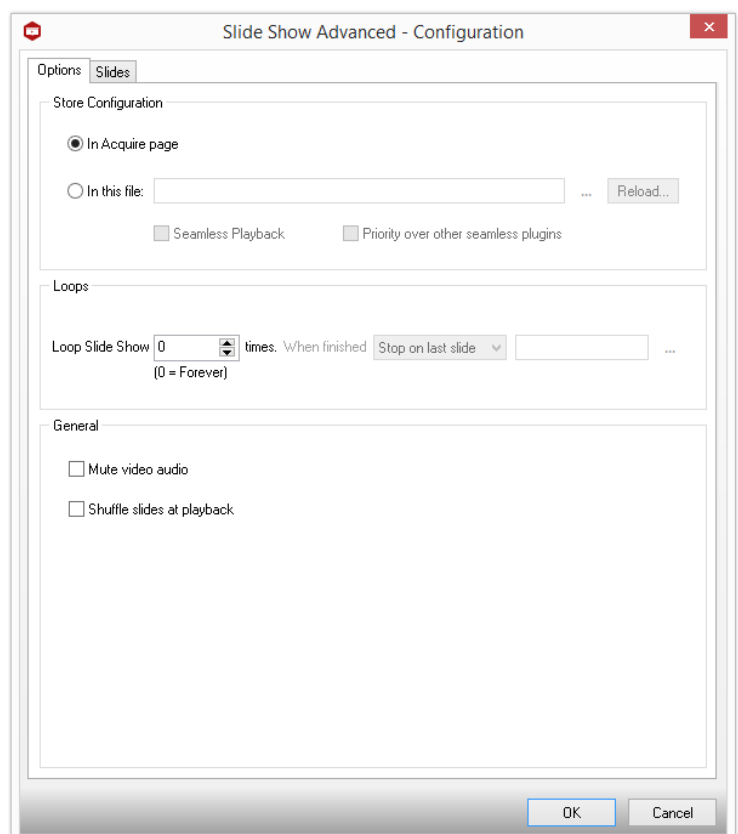
3. Place a Slide Show app on multiple consecutive pages. Make sure they all use the same configuration file and have Seamless Playback selected. Now the same slide show will play seamlessly over these pages.

If there are multiple seamless page apps they will all compete to remain foremost on the screen. If this becomes an issue (E.g. when they overlap) you can select *one* of them to have priority. This one will then remain on top of the others.

Tip: You should only set *one* page app to have priority.

4. Select how many times to loop the Slide Show Playlist.

Tip: Leave as 0 to loop continuously.



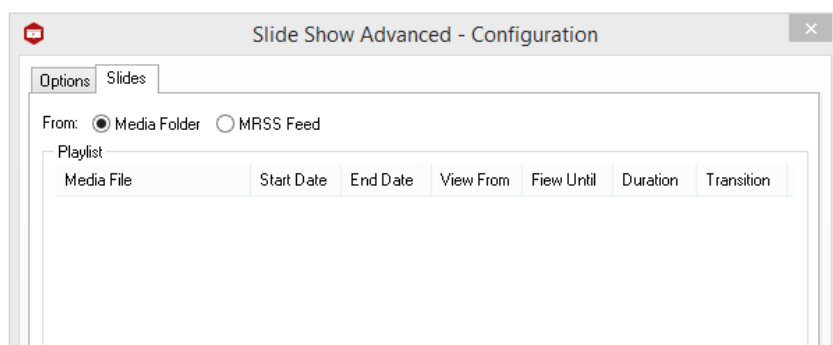
If set to loop a specific number of times you can select what should occur when the loops have finished.

- Stop on last slide: The last slide shown remains visible.
- Jump to page: Enter the page ID to jump to. Type or use the "..." button to select.
- Timeout page: Displays the "Are you still there" message.
- Quit page does not display the "Are you still there" message.

Video files will play silently. This does not affect flash animations.

Your slides will be shuffled to play back in a random order.

Slide Show Advanced Configuration – Slides tab.



1. Use the 'slides' tab to build a playlist of slides to show on your pages. A slide consists of a media file and will play the slide according to how it has been set up.

A Playlist can be created manually from media found in the project's media folder or automatically from an MRSS feed. **This will require the RSS feed app which can be purchased separately.**

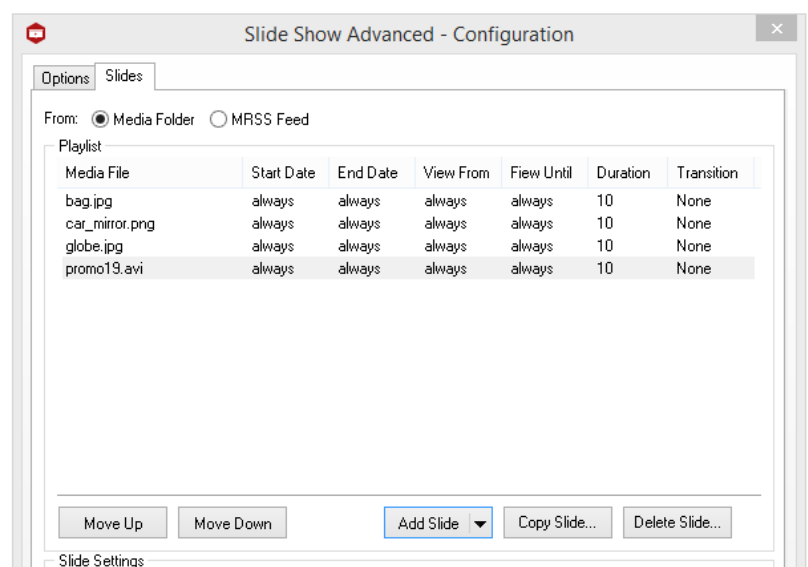
Media Folder Playlist.

Use this mode to create a playlist from media files found in the project's media folder. The top part of the screen is the playlist of the slides.

Slides are shown in order from top to bottom (unless shuffle option is selected).

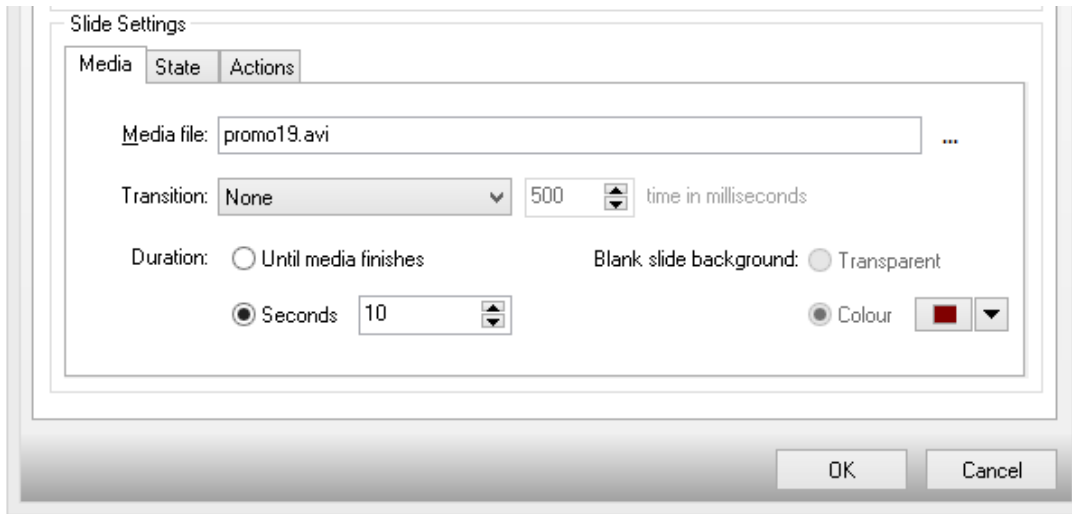
Use the buttons to manage the list, moving the slides up or down to change the order of playback.

Tip: You can also drag slides into position.



Slide Settings – Media tab.

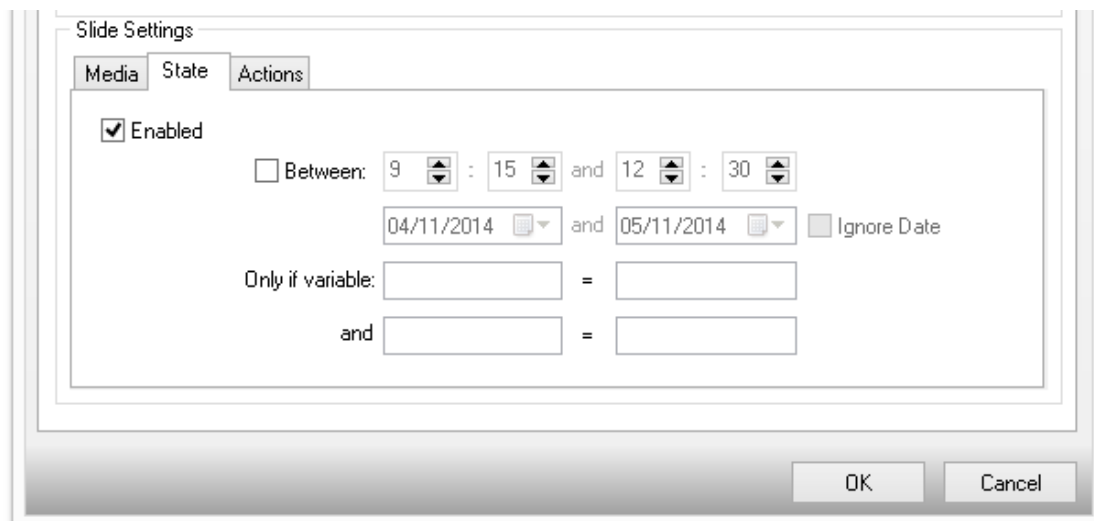
Settings can be changed for each of the individual slides using the Slide Settings options as shown below.



1. Select the media file you wish to display – this can also be an Acquire Variable.
2. Select the transition type and duration of the transition between the slides.
3. Select the duration of the slide – how long the slide should be displayed for. Alternatively you can ask Acquire to display the slide for as long as the media takes to play. (this is particularly useful if displaying video files.)
4. Set how blank slides will displayed. They can be transparent or filled with a colour.

Slide Settings – State tab.

Use these options to specify when the slide is allowed to be shown.



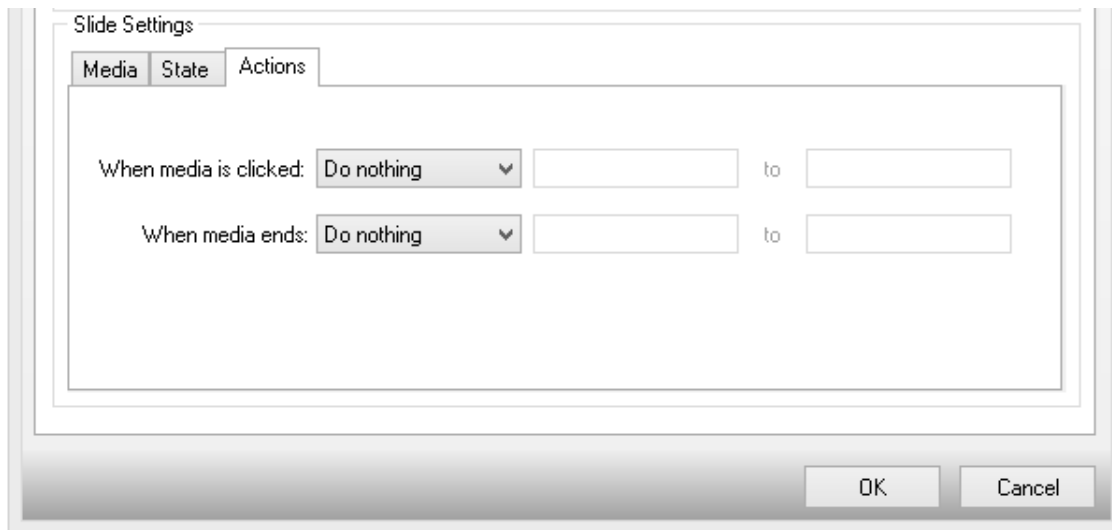
Enabled – If checked then the slide is shown according to the rules in this tab. If not checked the slide is never shown.

Between – Check this to select the times and dates of when you would like the slides to be displayed. If not checked then the slide will be shown at all times.

Only if variable – This slide will only be shown when the variables equal the values. This way you can externally control which slides are shown. If the boxes are empty then the slides will always be shown.

Slide Settings – Actions tab.

Use this tab to define specific actions when the slides are interacted with by the end-user.

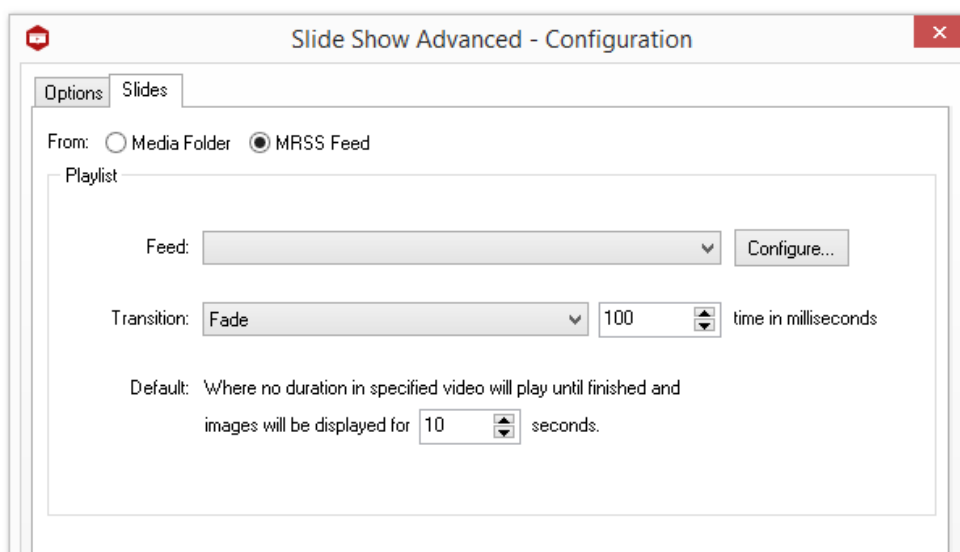


When media is clicked – select what action to perform when the user clicks on the slide.

When media ends – select what action to perform when the media ends.

MRSS Playlist.

Use this mode to automatically generate a playlist from the media contained within an MRSS feed. **You will need to purchase and license the RSS app.**



1. Select the feed from which to download media to make your playlist. Press the 'Configure' button to add/edit feeds using the RSS app.

2. Select the type and duration of the transition between one slide and the next.

3. You may also want to specify a default duration time for the image media where the duration has not been specified in the feed.

MRSS Format.

Slide Show assumes that the feed will adhere to the MRSS standards and contain one or more media:content elements.

Duration is taken from the media:content element's duration attribute.

Dates between which the slide is played are taken from the Dublin Core metadata dcterms:valid element's start and end attributes e.g.:

```
<dcterms:valid>start=2012-10-19T18:00:00; end=2012-10-19T20:00:59; scheme=W3C-DTF</dcterms:valid>
```

The feed server should also supply the media modified dates otherwise the RSS app will continuously download media even if it has not changed.