



# Slide Show App.



Revolutionising digital interaction.

Contents

Introduction. ....3

Uses.....3

Using Slide Show app.....3

    Slide Show Configuration – Picture Location tab.....4

    Slide Show Configuration - Animation tab.....5

## Introduction.

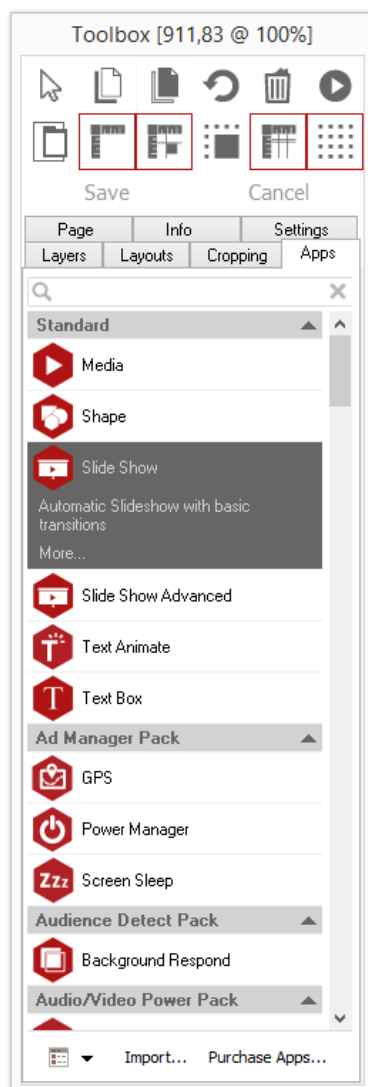
To maximise engagement with your target audience it is important to create page designs in provocative formats. Zoning content allows you to mix adverts with informative content, data feeds and other relevant information.

## Uses.

Use this app to point to a folder full of media. The app will automatically play the content, switching between media using slow fades, panning and zooming. The duration that media is displayed can be set and scaled to fit. The Slide Show Advanced app gives you more control over the playback of content and cleverly enables actions that can be pre-set for advanced control.

## Using Slide Show app.

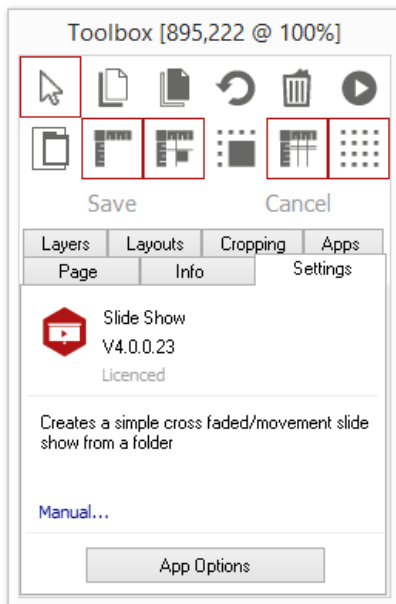
To access the app open an existing or new page and select the 'App' tab of the page editor 'Toolbox' (shown below). This App comes as standard with Acquire V4 and is therefore not sold or licensed separately,



Select the app from the list or search for it using the search bar. When an app is selected it will be highlighted as shown.

Here the Slide Show app has been selected.

Once you have selected your app draw an area on your page where you would like to use the app. In this case you will be drawing a space where you want your slideshow to be shown on the page. You can resize and re-position this at any point.

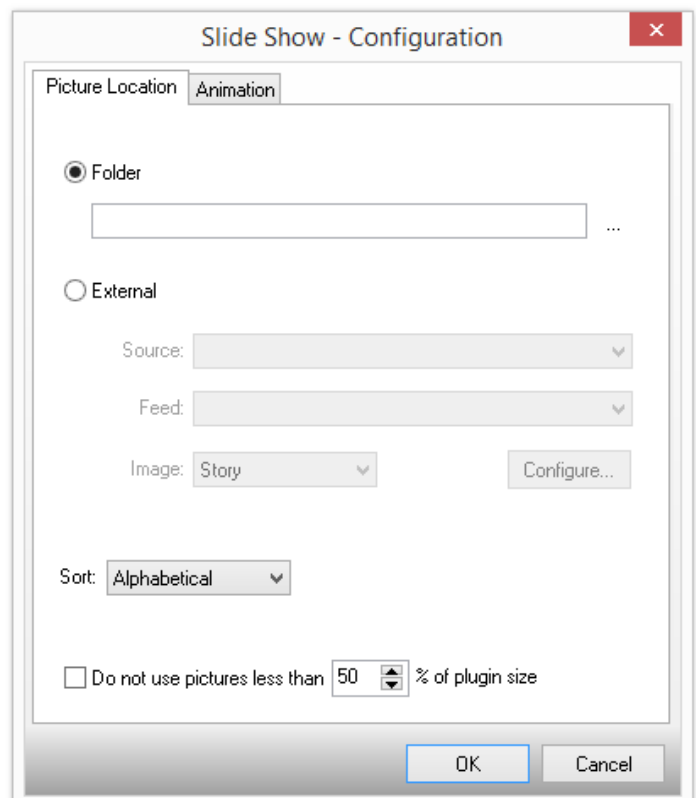


The 'Settings' tab within the Toolbox will automatically open when the app is added to the page.

From here you can set your app up by clicking on the 'App Options' button.

### Slide Show Configuration – Picture Location tab.

1. Use this tab to navigate to where your media files are saved. Press the '...' button to navigate to this folder on your computer.
2. Check the 'External' option to include media from an RSS, Twitter or Facebook feed. RSS app will need to be licensed to use this feature.
3. Choose where you want the images pulled from. You can get images from stories, profiles or both.
4. Press the 'Configure' button to connect the RSS feed with Acquire.
5. You can also define how you want slides sorting. Choose from Alphabetical, None or Random.
6. So that the images fit nicely into the area that you have drawn on your page you can tell Acquire not to show any media that is less than a particular size of the app box.



### Slide Show Configuration - Animation tab.

1. Use the Stretch and Scale options to define whether Acquire stretches the images to fill the box drawn on your page or whether you want the image to be scaled, meaning that it will keep its aspect ratio.
2. Select how long you want the media to be shown for and what style of transition you wish to include. Options include: Cross fade, Panning, Zoom and sliding.
3. Here you can also set the transition speed and reverse the order of images by checking the 'Reverse' check box.
4. Click 'OK' to save changes.

