



Samsung Control App.



Revolutionising digital interaction.

Contents.

Introduction.....3

Uses.....3

Using Samsung Control app.....3

Understanding the App Options.....5

Licensing apps.6

Introduction.

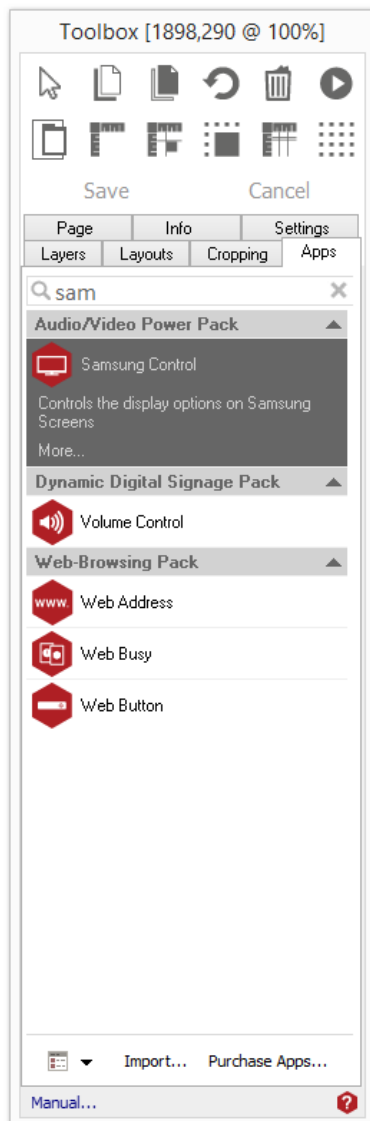
The app allows you to control a compatible Samsung connected to the system.

Uses.

Typically this app is used when the MagicInfo software has been replaced by Acquire. An automated install script can be provided for this purpose should it be required. Contact your reseller for more information. There are three *DLL* files which should be located within the system as part of the Samsung install that are used by this app. If these are missing then this app will not operate. The *DLL* files are called *MDCCComApi.dll*, *MDCCCommApi.dll* and *MDCSerial.dll*.

Using Samsung Control app.

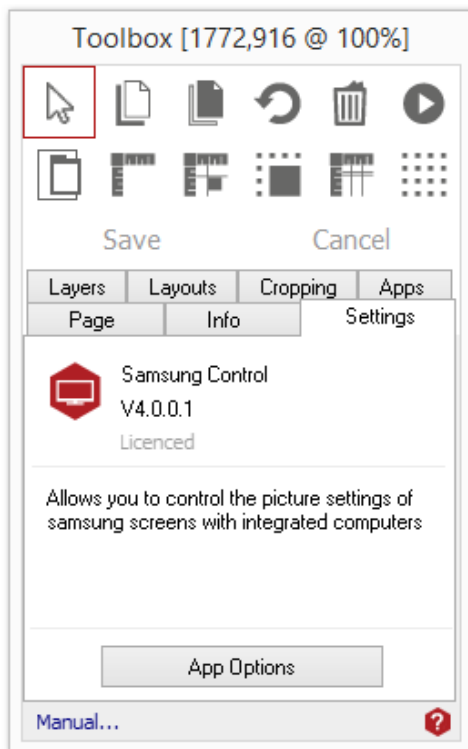
To access the app open an existing or new page and select the 'App' tab of the page editor 'Toolbox' (shown below). Apps are grouped within the relevant app packs and are displayed red if they have been licenced. For more information about licencing apps go to [Licensing apps](#).



Select the app from the list or search for it using the search bar. When an app is selected it will be highlighted as shown.

The Samsung Control App has been selected here.

Once you have selected your app draw an area on your page where you would like the app to be shown.

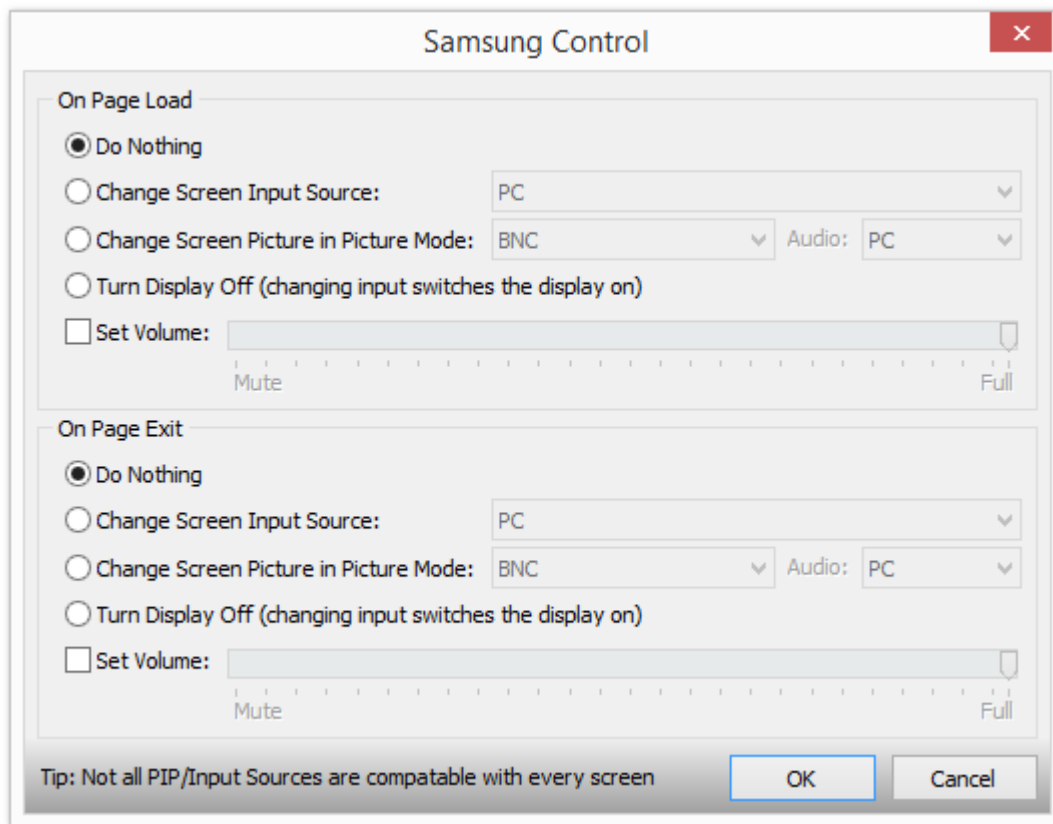


The 'Settings' tab within the Toolbox will automatically open when the app is added to the page.

From here you can set your app up by clicking on the 'App Options' button.

Understanding the App Options.

The app allows you to apply settings to the screen on load/play and on stop/page exit. This is an overview of the settings that can be configured for the app.



The screenshot shows a dialog box titled "Samsung Control" with a close button (X) in the top right corner. The dialog is divided into two main sections: "On Page Load" and "On Page Exit". Each section contains the same set of options:

- ☒ Do Nothing
- ☐ Change Screen Input Source: PC (dropdown menu)
- ☐ Change Screen Picture in Picture Mode: BNC (dropdown menu) Audio: PC (dropdown menu)
- ☐ Turn Display Off (changing input switches the display on)
- ☐ Set Volume: A volume slider ranging from Mute to Full.

At the bottom of the dialog, there is a tip: "Tip: Not all PIP/Input Sources are compatible with every screen". To the right of the tip are two buttons: "OK" and "Cancel".

Do Nothing.

If this is selected, the display is not changed. (This does not affect whatever volume settings you may have set).

Change Screen Input Source.

This will cause the display to switch on if it was previously off, and then to change input to the source you have selected. Note that not all of the options on this list will be available to your model of screen.

Change Screen picture in Picture Mode.

This enables the Picture in Picture mode on the display. This will only work if the current input source is set to PC. The picture box will be displayed where the app window is placed on the page. You can also choose which audio source is sent to the speakers. Note that not all screens support every combination of picture in picture modes.

Turn Display Off.

Actually switches the screen off. This is the same as pressing the power button on the remote.

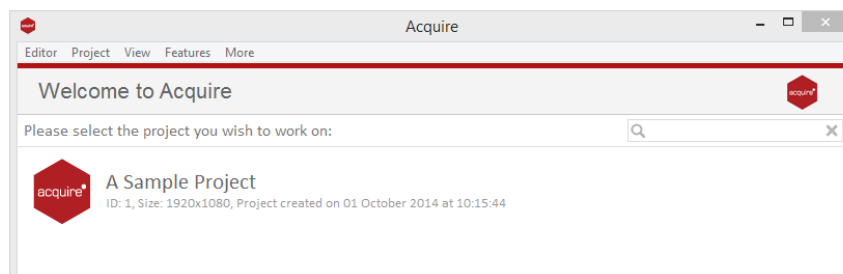
Set Volume.

Allows you to set the volume of the speakers attached to the screen.

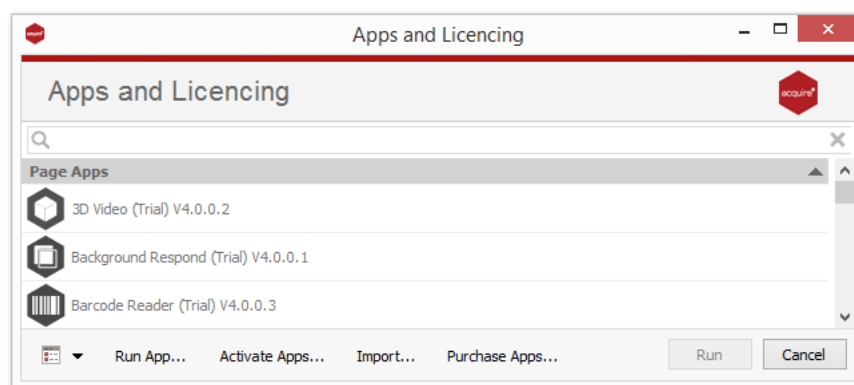
Licensing apps.

On purchasing an app pack you will be provided with a licence key. Save this to your computer.

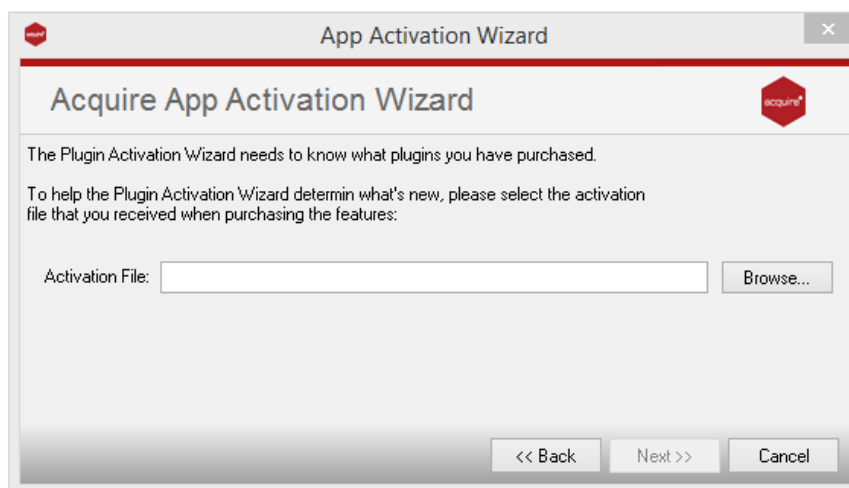
From the main 'Welcome Screen' click on *Editor* and select Apps and Licensing from the drop down menu.



Click *Activate Apps* and follow the onscreen instructions.



Use the 'Browse...' button to locate your saved licence key and follow the instructions to activate.



Your apps should now be activated and can be accessed from the apps list or from within a working project or project page.