



# Power Manager App.



Revolutionising digital interaction.

**Contents.**

Introduction.....3

Using Power Manager app.....3

Understand the App Options. ....4

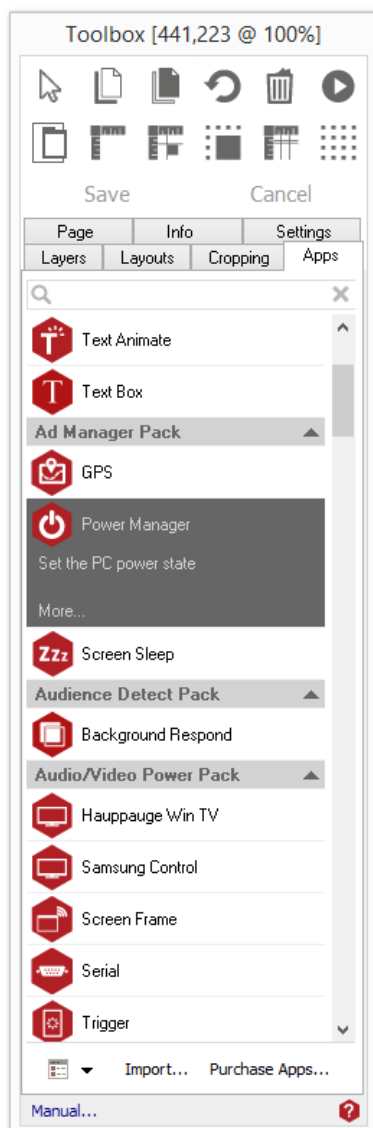
Licencing apps. ....5

## Introduction.

If you have screens located in office blocks, buildings or reception areas that may only be viewed during the day, you may wish to power down your machines overnight and turn them back on again in the morning. However, this can be difficult if you manage machines and players from a central location. Instead of doing this manually Power Manager enables you to specify power on and off times saving power and increasing the longevity of the machines.

### Using Power Manager app.

To access the app open an existing or new page and select the 'App' tab of the page editor 'Toolbox' (shown below). Apps are grouped within the relevant app packs and are displayed red if they have been licenced. For more information about licensing apps go to [Licencing apps](#).

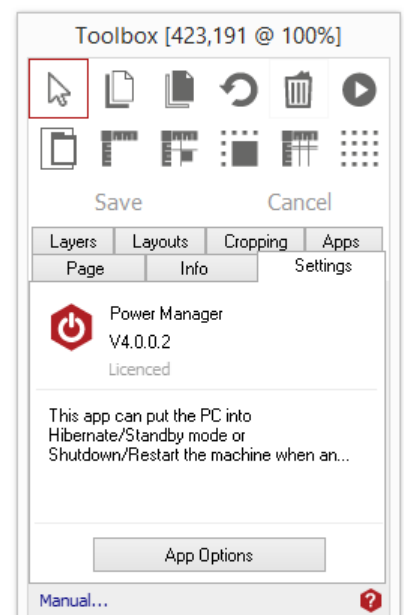


Select the app from the list or search for it using the search bar. When an app is selected it will be highlighted as shown.

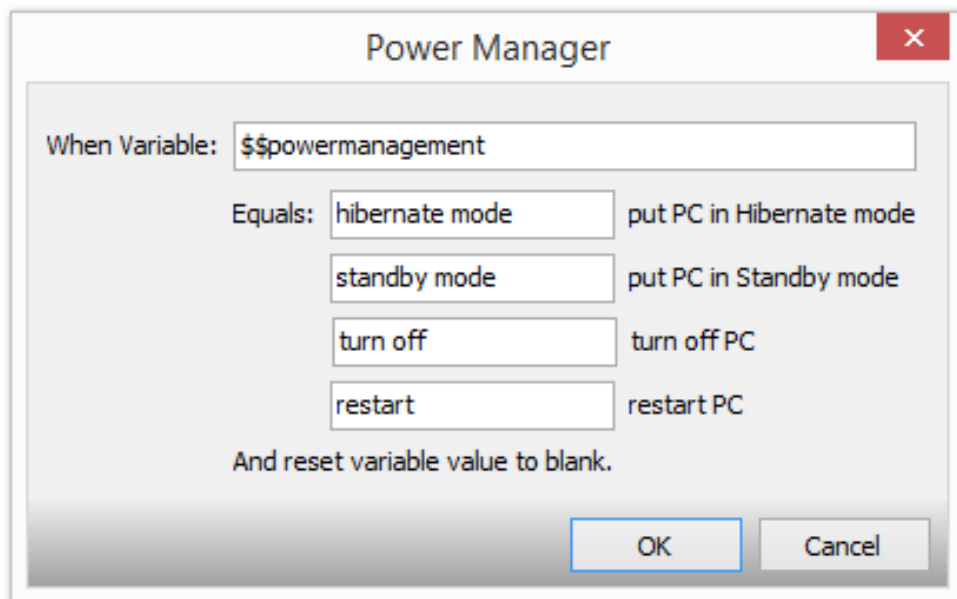
Once you have selected your app draw an area on your page where you would like to use the app.

The 'Settings' tab within the Toolbox will automatically open when the app is added to the page.

From here you can set your app up by clicking on the 'App Options' button.



## Understand the App Options.



The image shows a 'Power Manager' dialog box with a title bar and a close button. Inside, there is a 'When Variable:' label followed by a text box containing '\$\$powermanagement'. Below this, there is an 'Equals:' label followed by a list of four options, each in a text box, with a corresponding action to its right. The options are 'hibernate mode' (put PC in Hibernate mode), 'standby mode' (put PC in Standby mode), 'turn off' (turn off PC), and 'restart' (restart PC). At the bottom, there is a line of text 'And reset variable value to blank.' and two buttons, 'OK' and 'Cancel'.

When Variable:	Value	Action
Equals:	hibernate mode	put PC in Hibernate mode
	standby mode	put PC in Standby mode
	turn off	turn off PC
	restart	restart PC

And reset variable value to blank.

OK Cancel

### Variable.

Enter a variable for the app to monitor.

### Action.

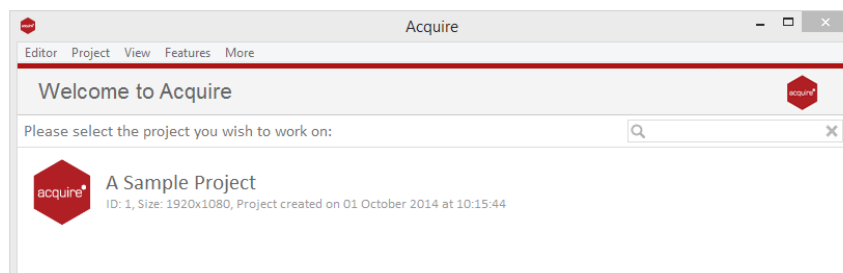
Enter values for the monitored Variable.

When that Variable is set to this value the corresponding power management action will be performed.

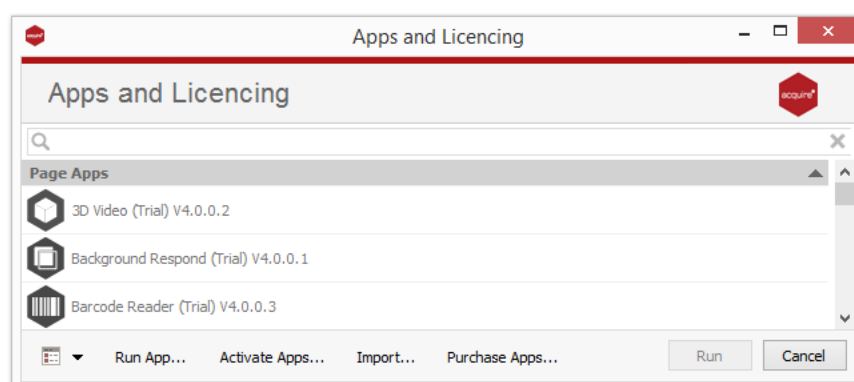
## Licencing apps.

On purchasing an app pack you will be provided with a licence key. Save this to your computer.

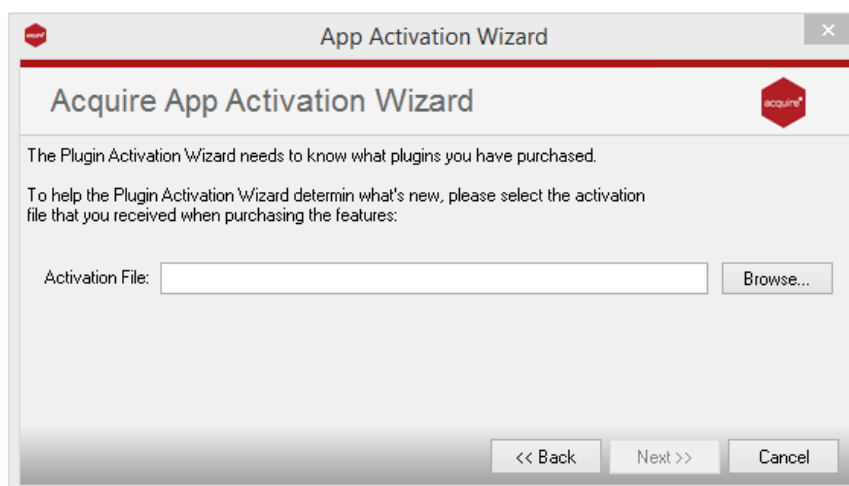
From the main 'Welcome Screen' click on *Editor* and select Apps and Licencing from the drop down menu.



Click *Activate Apps* and follow the onscreen instructions.



Use the 'Browse...' button to locate your saved licence key and follow the instructions to activate.



Your apps should now be activated and can be accessed from the apps list or from within a working project or project page.