



Media Streamer App.



Revolutionising digital interaction.

Contents.

Introduction.....3

Understanding the App Options.....4

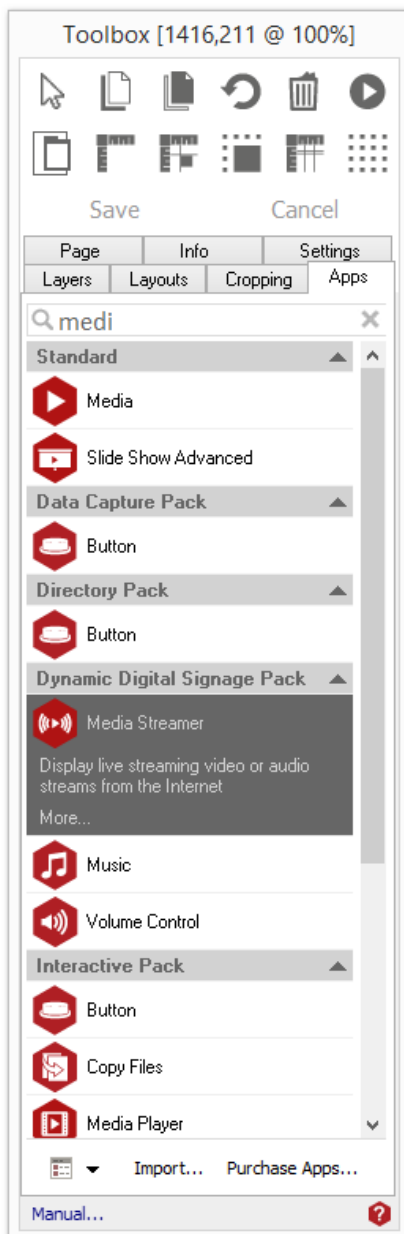
Licensing apps.5

Introduction.

Use this app to allow your Acquire pages to safely stream and display live audio, video and website feeds from the Internet including handling drop-outs or buffering of data.

Using the Media Streamer App.

To access the app open an existing or new page and select the 'App' tab of the page editor 'Toolbox' (shown below). Apps are grouped within the relevant app packs and are displayed red if they have been licenced. For more information about licensing apps go to [Licensing apps](#).

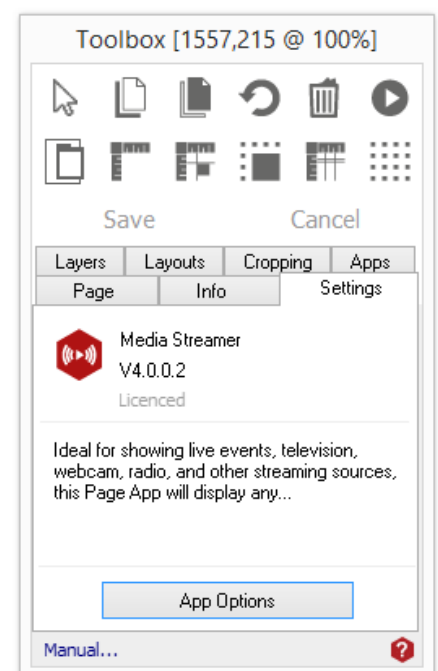


Select the app from the list or search for it using the search bar. When an app is selected it will be highlighted as shown.

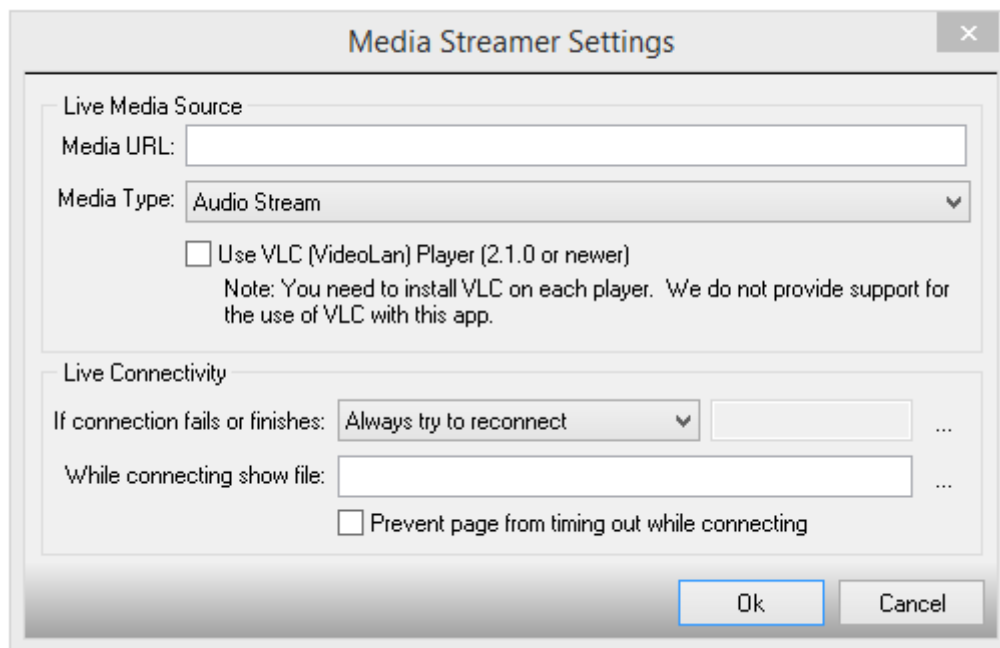
Once you have selected your app draw an area on your page where you would like to use the app.

The 'Settings' tab within the Toolbox will automatically open when the app is added to the page.

From here you can set your app up by clicking on the 'App Options' button.



Understanding the App Options.



Media URL: The web address of the media to be streamed.

Media Type: The type of media stream. This can be,

- Audio
- Video Stream
- Website

VLC Play Tick Box: If you are using this app to play audio or video then you can request that it uses the VLC (VideoLAN) ActiveX control instead. This has the advantage of supporting further formats that Acquire does not, as well as allowing for streaming formats that Windows does not know about.

To use this you are required to install at least V0.8.6 of VLC player onto each of your players (including the ActiveX control). Note that we do not provide any support for use of this option and it is up to you to ensure you have the relevant licences to use the codec's and media you are streaming.

If the VLC ActiveX control cannot be found or does not work then this app will fall back to using Windows Media Player.

Live Connectivity.

If connection fails or finishes: Select the action to be taken if the connection fails or finishes. This can be

- Always try to reconnect
- End Page
- Quit Page
- Jump to page with ID. When this option is selected use the adjacent controls (3a) to select the page to jump to.

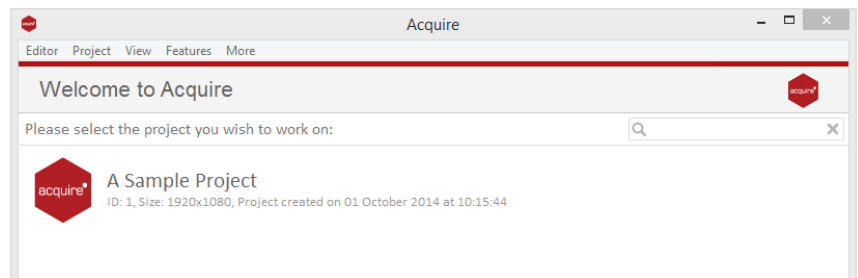
If connection fails or finishes: Choose a media file to display while connecting. This can only be a BMP, JPEG, PNG or Flash file.

Prevent Page from timing out: Tick this box if you wish to prevent the page from timing out while connecting.

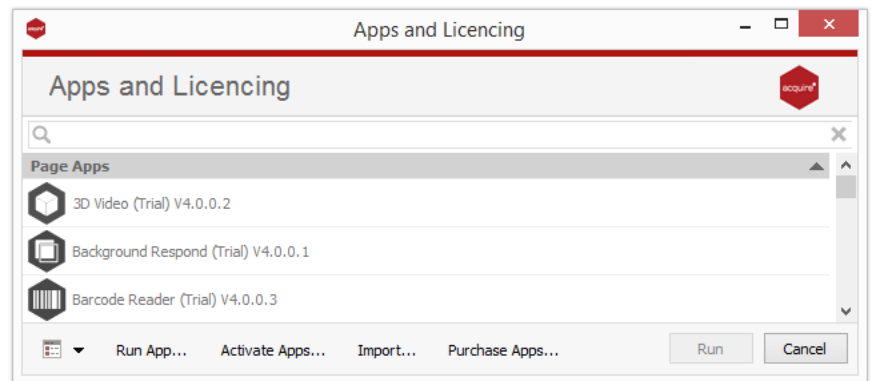
Licensing apps.

On purchasing an app pack you will be provided with a licence key. Save this to your computer.

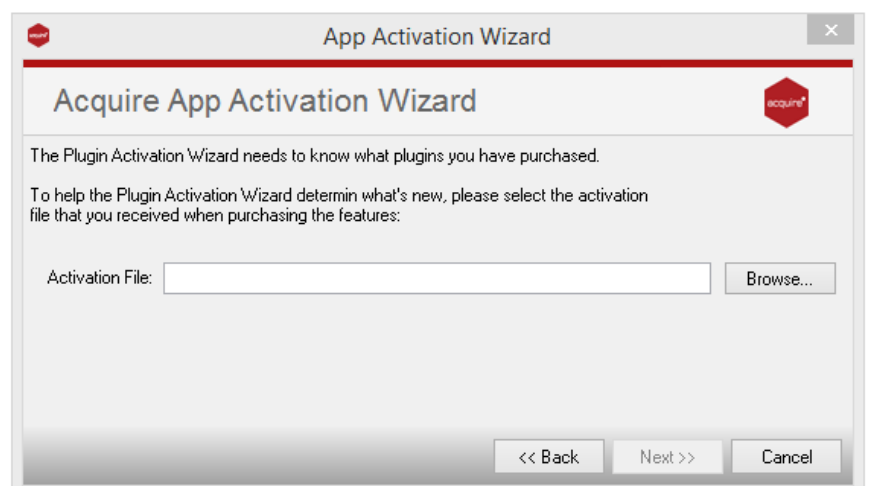
From the main 'Welcome Screen' click on *Editor* and select Apps and Licensing from the drop down menu.



Click *Activate Apps* and follow the onscreen instructions.



Use the 'Browse...' button to locate your saved licence key and follow the instructions to activate.



Your apps should now be activated and can be accessed from the apps list or from within a working project or project page.