



Screen Frame App.



Revolutionising digital interaction.

Contents.

Introduction.....3

Using the Frame Server.exe.....3

Using Screen Frame Page App.4

Understanding the App Options.....5

Licensing apps.6

Introduction.

The Screen Frame App allows you to display a regularly updated frame (snapshot) of another PC's screen within an Acquire Page.

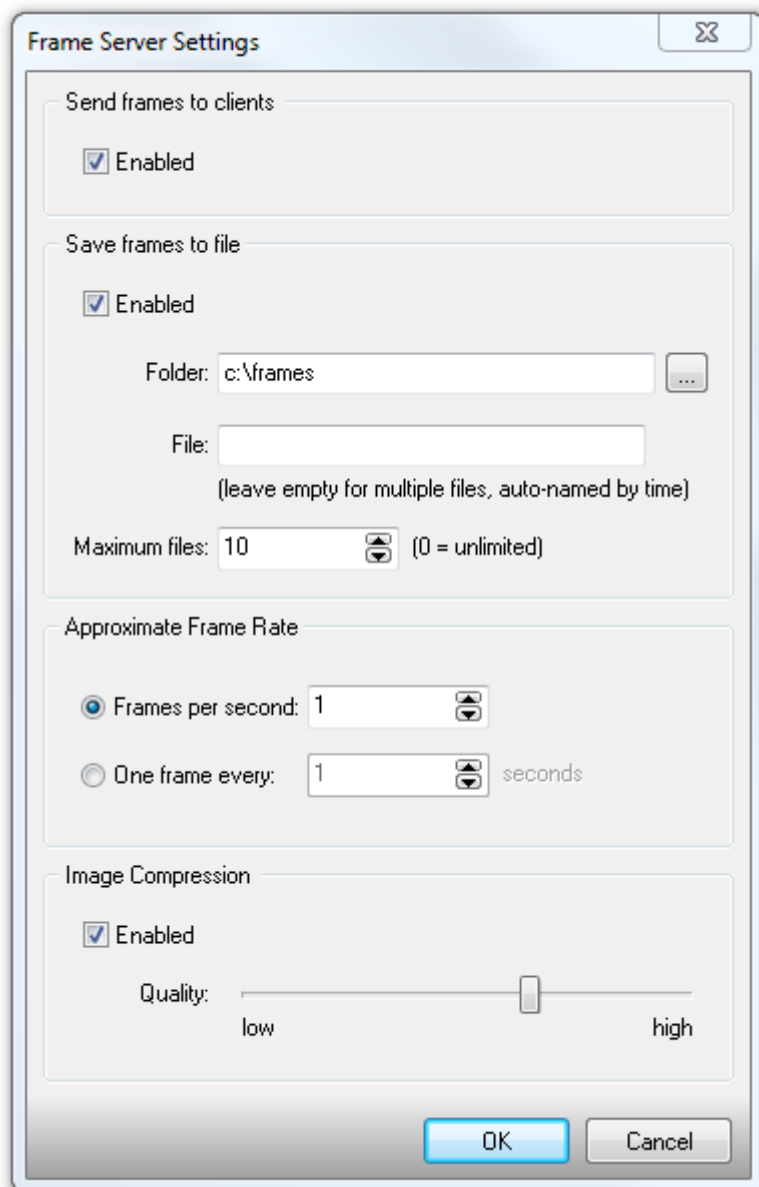
The app is comprised of two parts:

1. Frame Server – this is the FrameServer.exe application which is run on a PC from which you wish to obtain frames. It captures frames and sends them to the Frame Clients. (This can also be used separately to record and save frames to disk at regular intervals.

Please contact customersales@acquiredigital.com to obtain your copy.

2. Frame Client – This is the FrameClient.acq or page app, which connects to the Frame Server to retrieve and display frames.

Using the Frame Server.exe



Settings.

Use the setting to determine the frame grabbing frequency and what to do with them.

Send frames to clients:

Frames will be sent to all FrameClient.acq apps that attach to this PC's IP address. See [Frame Client section](#).

Save frames to file:

Frames will be saved into the selected folder. You can select a file name, in which case only one, constantly updated, image file will exist. If you don't select a file name multiple image files will be saved up to the entered Maximum files (oldest is deleted.) Files will be named according the time they were grabbed.

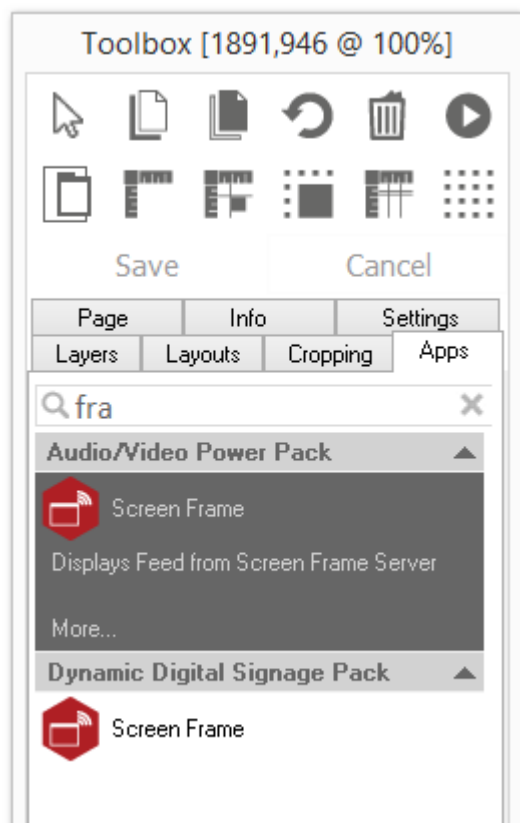
Approximate Frame Rate:

Enter how often the frame should be grabbed.

Image Compression:

Frames are saved as Jpeg images. You can select the compression rate here.

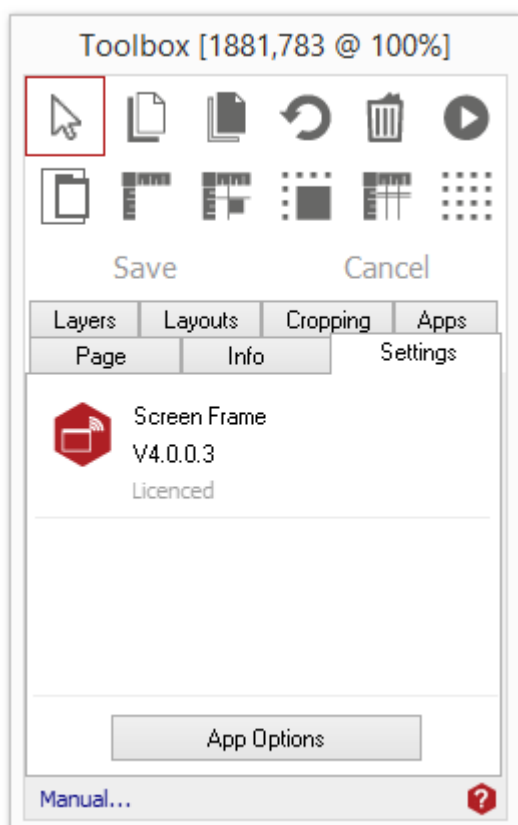
Using Screen Frame Page App.



Select the app from the list or search for it using the search bar. When an app is selected it will be highlighted as shown.

The Screen Frame App has been selected here.

Once you have selected your app draw an area on your page where you would like the app to be shown.

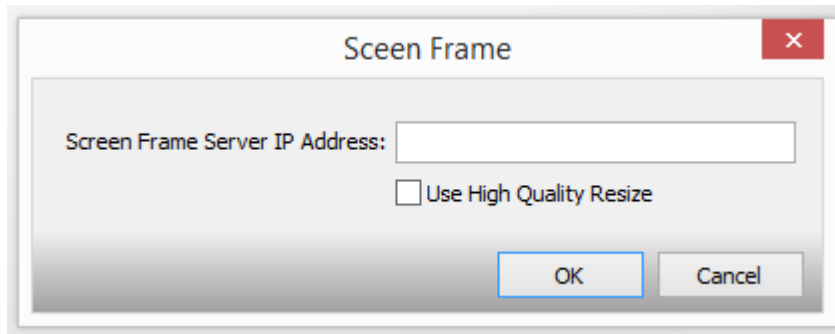


The 'Settings' tab within the Toolbox will automatically open when the app is added to the page.

From here you can set your app up by clicking on the 'App Options' button.

Understanding the App Options.

The FrameClient.acq is an Acquire Page App. Place it on your page and tell it what PC you would like to display frames from. If the Frame Server is running on that PC it will send frames to this app which will be displayed on your page.



Frame Server IP Address:

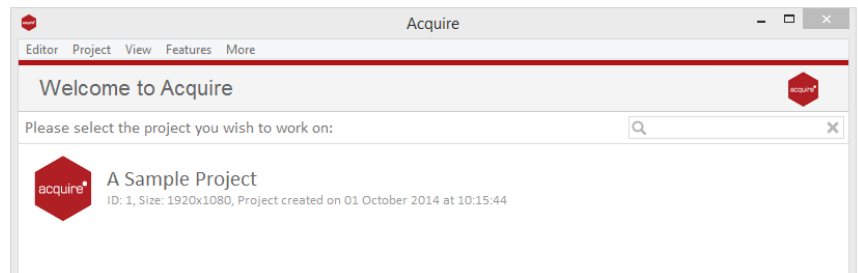
Enter the location of the OC from which you wish to display frames. This PC must be running Frame Server (FrameServer.exe).

Use the tick box to set the quality of the frame when resizing. If performance determinates with a higher frame rate you may want to set this to a lower quality.

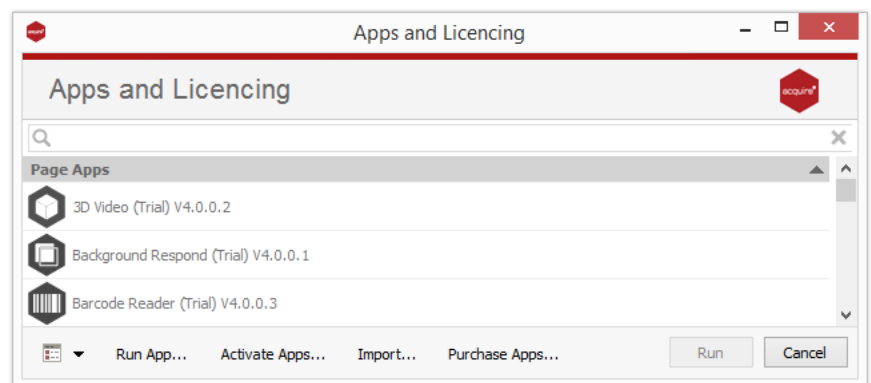
Licensing apps.

On purchasing an app pack you will be provided with a licence key. Save this to your computer.

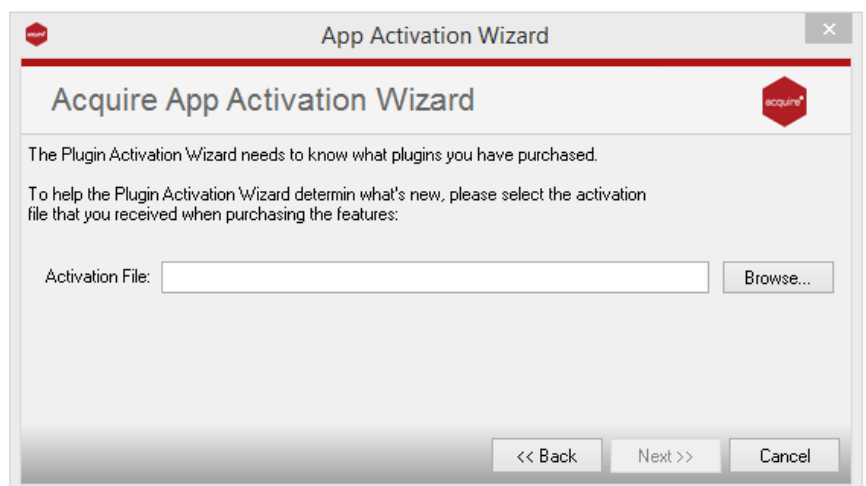
From the main 'Welcome Screen' click on *Editor* and select Apps and Licensing from the drop down menu.



Click *Activate Apps* and follow the onscreen instructions.



Use the 'Browse...' button to locate your saved licence key and follow the instructions to activate.



Your apps should now be activated and can be accessed from the apps list or from within a working project or project page.