



Excel App.



Revolutionising digital interaction.

Contents.

Uses..... 3

Using Excel Page App. 3

Understanding the app options..... 4

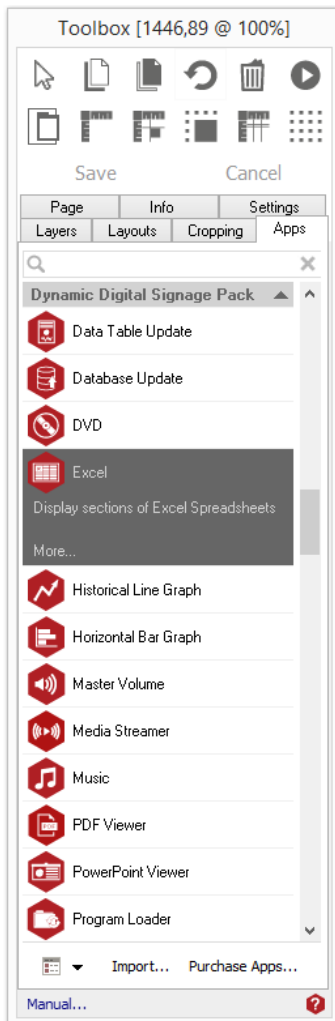
Licensing apps. 5

Uses.

This page app allows you to display Excel spreadsheets in your projects. The app can only display CSV or XLSX files (Excel 2007 and up).

Using Excel Page App.

To access the app open an existing or new page and select the 'App' tab of the page editor 'Toolbox' (shown below). Apps are grouped within the relevant app packs and are displayed red if they have been licenced. For more information about licensing apps go to [Licensing apps](#).

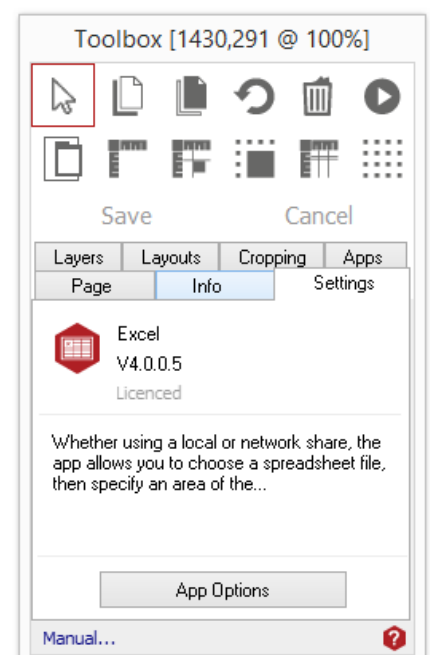


Select the app from the list or search for it using the search bar. When an app is selected it will be highlighted as shown.

Once you have selected your app draw an area on your page where you would like to use the app.

The 'Settings' tab within the Toolbox will automatically open when the app is added to the page.

From here you can set your app up by clicking on the 'App Options' button.



Understanding the app options.

Boarder and Margins tab.

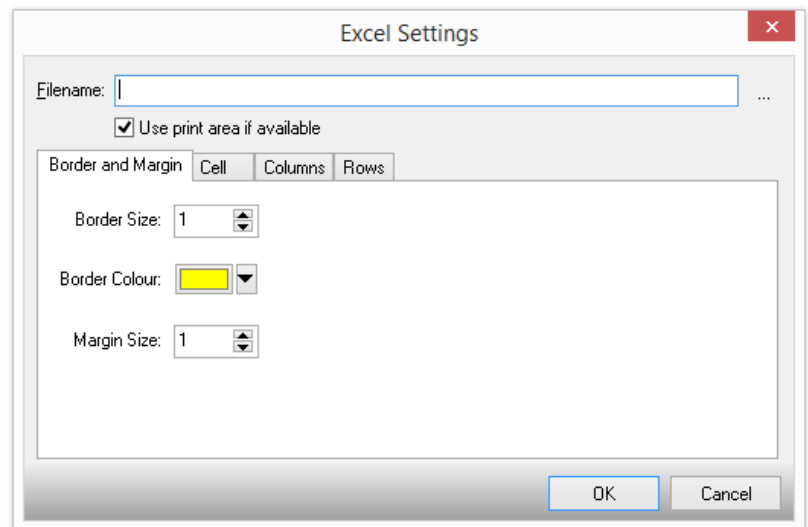
Type in the name of an Excel CSV or XLSX file for the app to display. If the file is an XLSX file the specified print area can be used.

Use the controls to set the appearance of the cells.

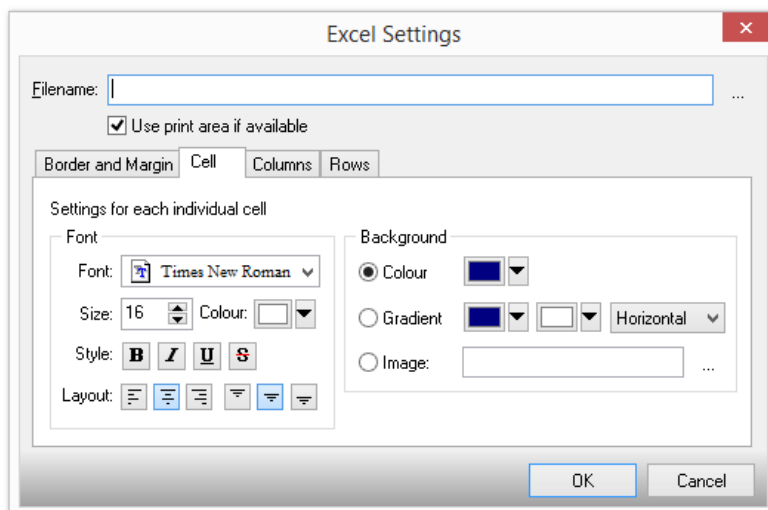
Border Size: The width and colour of the grid lines.

Margin Size: The space between the text and the cells edge.

Border Colour: The colour used to draw the border of cells.



Cell Tab.



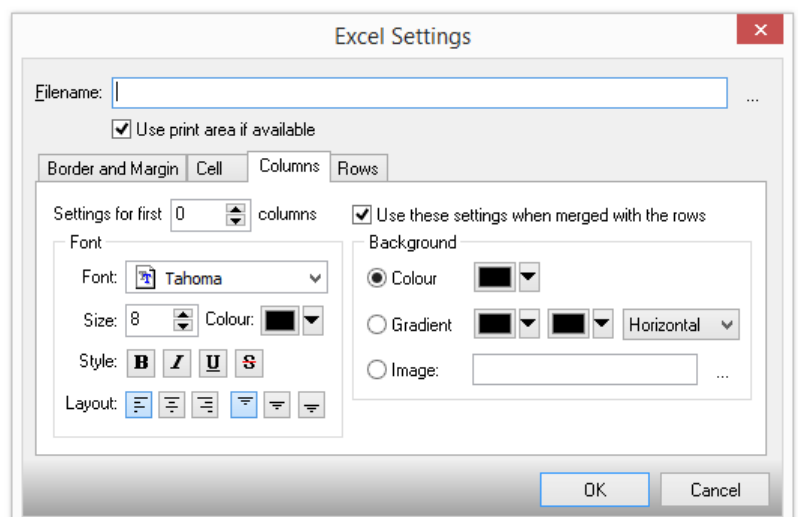
Use this section to specify the font used to draw text in the cells.

Use this section to specify what is displayed in the background of each cell.

Columns & Rows Tabs.

The columns and rows tabs work exactly the same.

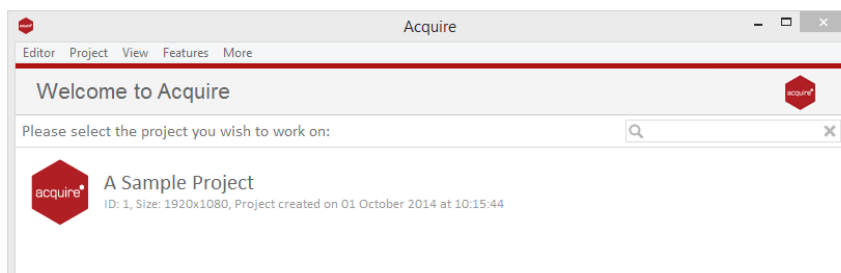
In here you can specify the formatting of the table which can be applied to only the first few row if you wish. This is particularly useful for creating a header.



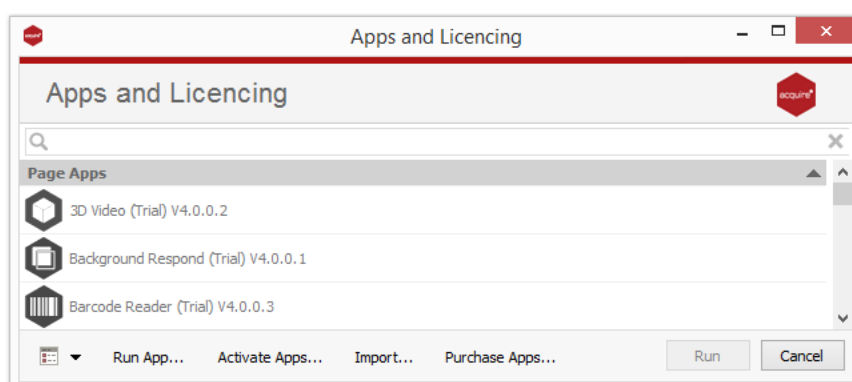
Licensing apps.

On purchasing an app pack you will be provided with a licence key. Save this to your computer.

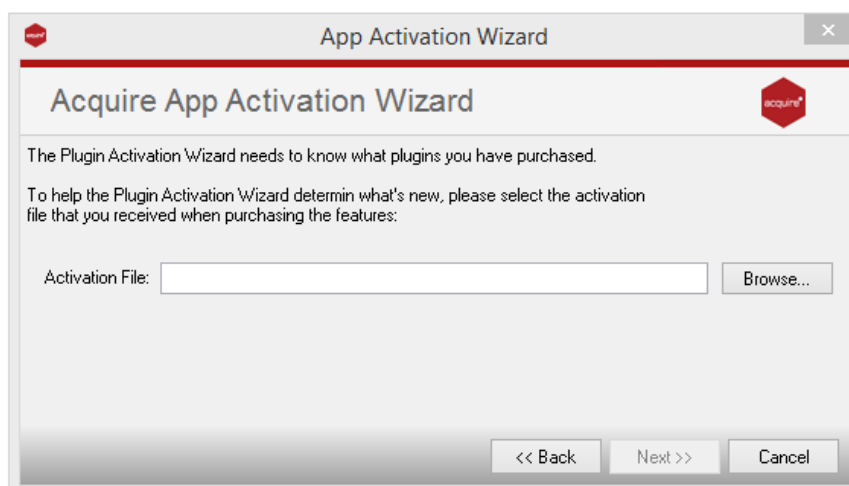
From the main 'Welcome Screen' click on *Editor* and select Apps and Licensing from the drop down menu.



Click *Activate Apps* and follow the onscreen instructions.



Use the 'Browse...' button to locate your saved licence key and follow the instructions to activate.



Your apps should now be activated and can be accessed from the apps list or from within a working project or project page.