



DVD App.



Revolutionising digital interaction.

Contents

Introduction.....3

Uses.....3

Using the DVD App.....3

Understanding the App Options.....4

Appendix 1.....5

Appendix 2.....6

Licensing apps.7

Introduction.

Allows the playback of DVDs on a specified page within your project. Playback can be controlled by setting actions such as play and fast-forward.

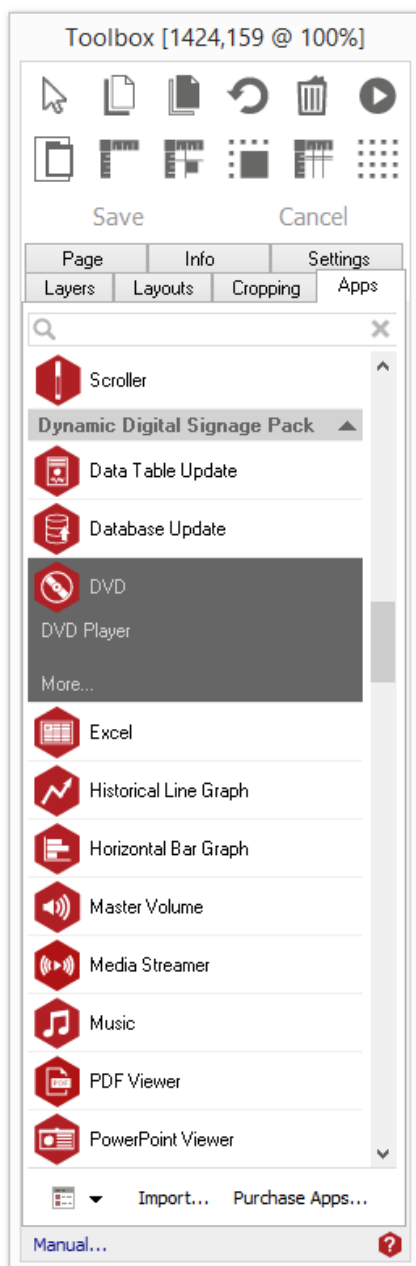
*For commercial DVD playback the Corel DVD XPack app for Windows media Player is required and must be installed on the player.

Uses.

Make your digital signage more engaging by playing DVDs along-side other content.

Using the DVD App.

To access the app open an existing or new page and select the 'App' tab of the page editor 'Toolbox' (shown below). Apps are grouped within the relevant app packs and are displayed red if they have been licenced. For more information about licensing apps go to [Licensing apps.](#)

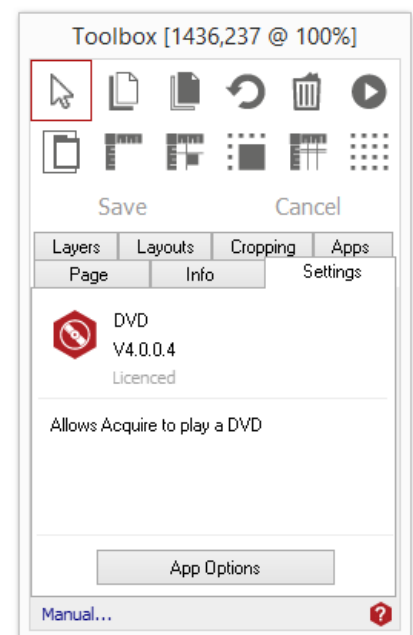


Select the app from the list or search for it using the search bar. When an app is selected it will be highlighted as shown.

Once you have selected your app draw an area on your page where you would like to use the app.

The 'Settings' tab within the Toolbox will automatically open when the app is added to the page.

From here you can set your app up by clicking on the 'App Options' button.



Understanding the App Options.

Control Variable.

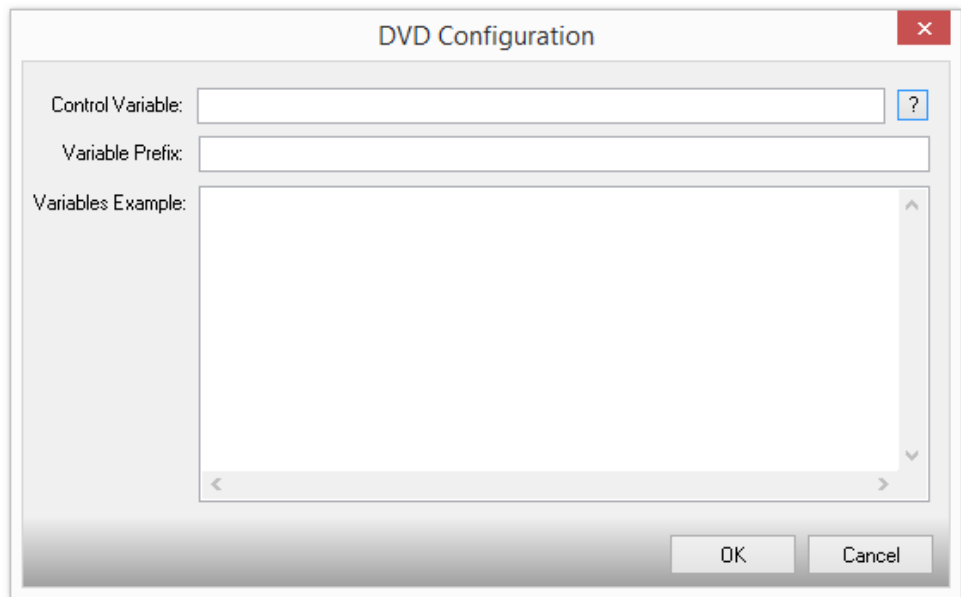
This is the variable that the DVD app monitors for commands such as "play" and "rip" etc.

See Appendix 1 or press the "?" button for a full list of commands.

Variable Prefix.

This is the prefix for the Acquire Variables where information is saved.

Information about the DVD, and playback status are saved into pre-defined variable names that begin with this value.



The screenshot shows a dialog box titled "DVD Configuration" with a red close button in the top right corner. Inside the dialog, there are three input fields: "Control Variable:" with a text box and a blue question mark button; "Variable Prefix:" with a text box; and "Variables Example:" with a large text area. At the bottom right of the dialog are "OK" and "Cancel" buttons.

See Appendix 2 for a full list of the variables set.

1. A list of the variables that will be set with information. See also Appendix 2.

Appendix 1.

The Control Variable is set to control DVD playback etc.

The command strings you can use are:

"play"

"stop"

"pause"

"playpause"

"rewind"

"fastforward"

"fastrewind"

"next" (chapter in the current title)

"previous" (chapter in the current title)"

"eject"

"titlemenu" (of the DVD)

"rootmenu" (of the area you are in)

"audio" (cycles tracks)

"subtitles" (cycles them)

and for menu navigation...

"up"

"down"

"left"

"right"

"ok" (presses selected button)

Appendix 2.

DVD information and status is saved to the following variables.

“\$\$DVD” is replaced by the Variable Prefix defined in the configuration.

\$\$DVD.Name

\$\$DVD.Chapter

\$\$DVD.Position (in title in "hh:mm:ss" format)

\$\$DVD.Duration (of title in "hh:mm:ss" format)

\$\$DVD.Percent (of title played)

\$\$DVD.State (1=Insert Disc, 2=Loading, 3=Ready, 4=Playing, 5=Paused, 6=Error)

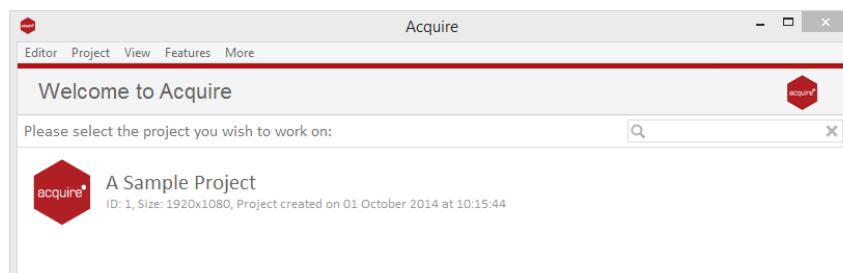
\$\$DVD.StateString ("Insert Disc", "Loading", "Ready", "Playing", "Paused", "Error")

\$\$DVD.LastError

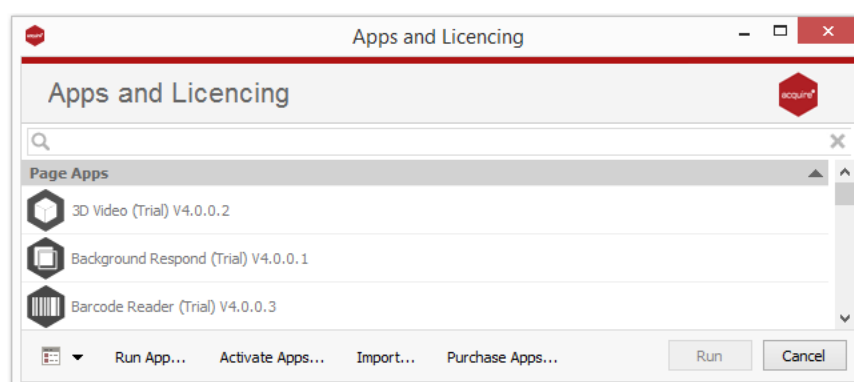
Licensing apps.

On purchasing an app pack you will be provided with a licence key. Save this to your computer.

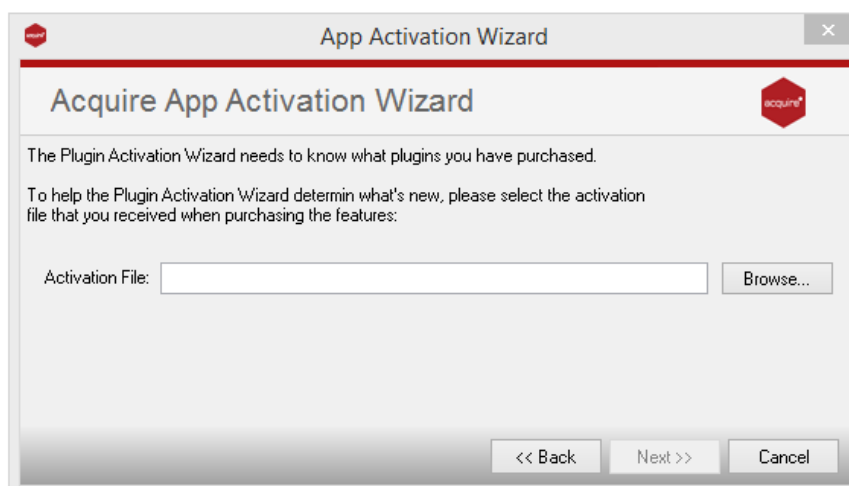
From the main 'Welcome Screen' click on *Editor* and select Apps and Licensing from the drop down menu.



Click *Activate Apps* and follow the onscreen instructions.



Use the 'Browse...' button to locate your saved licence key and follow the instructions to activate.



Your apps should now be activated and can be accessed from the apps list or from within a working project or project page.