

# Directory Builder App.



Revolutionising digital interaction.

## Contents.

Introduction. ....	3
Uses.....	3
1. Using Directory Builder page app. ....	4
Understanding the App Options.....	5
2. Using the Directory Builder Editor.....	6
Launching the Directory Builder Editor.....	6
Directory Builder - Editor Overview.....	7
POI file Editor explained. ....	10
Licencing apps. ....	11
Appendix 1 .....	12
XML File Format.....	12
POI (Points of Interest) XML File Format .....	15

## Introduction.

Directory Builder enables the easy creation of an interactive, animated directory so that your customers can easily find and locate products, points of interest, services or offices in an office block. Descriptions and other details of individual people, products or places can also be added along with promotional messages and offers. It can optionally work with Google Maps so that destinations can also be located and printed if required. There is also an integral editor feature so that directories can be built to fully reflect your company's identity.

The directory is defined in a special xml file. Directory files can be created directly (see Appendix I) or with the Directory Editor which is included in this app.

The Directory Builder comes in 2 parts:

1. **Directory Builder page app** – allows you to add a directory to a specific page within your project.
2. **Directory Builder Editor** – allows you to create and edit directories.


## Uses.

Here is an example of what a directory might look like:

Area	Activity	Type	Results
Disney	Entertainment	Theme Parks	Seaworld's Aquatica \$
Downtown	Parks	Water Parks	Wet and Wild \$
International Dr	Shopping		
Kissimmee			

**Results**  
Seaworld's Aquatica \$  
Wet and Wild \$

### Seaworld's Aquatica



Aquatica is a combination of animal experiences, water rides and slides, high-speed thrills and relaxing sandy beaches and will appeal to all ages.

5800 Water Play Way  
Orlando, FL 32821

Tel: 407-351-3600

[View on Map](#)

BACK TO SEARCH

**Tip:** Above graphics and directory file are not included however you will find them for download on the Acquire Website.

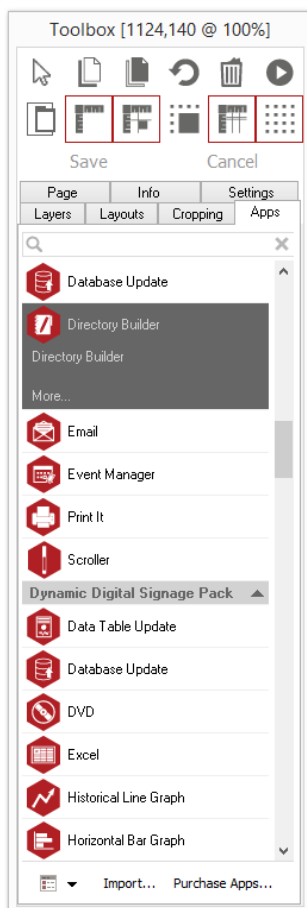
The first level (Area in the above example) shows a list of Point of Interest (POI) files. Each file may contain one or more POI, which are typically a location. The next two levels (Activity & Type in the example) are categories and subcategories of the points of interest in the POI file.

A user selects the POI file in the first level and is presented with the POI categories in the second. Upon selecting a category, subcategories are presented in the third level. They then select a subcategory to get a list of points of interests - from the POI file - that match the categories (Results in example).

Finally, selecting a POI will show its details.

If defined in the directory file, clicking on the "View on Map" button will show the POI on Google Maps.

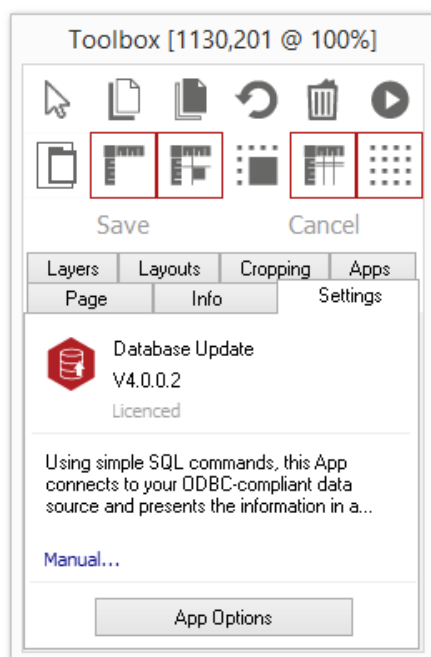
## 1. Using Directory Builder page app.



To access the app open an existing or new page and select the 'App' tab of the page editor 'Toolbox' (shown). Apps are grouped within the relevant app packs and are displayed red if they have been licenced. For more information about licencing apps go to [Licencing apps](#).

Select the app from the list or search for it using the search bar. When an app is selected it will be highlighted as shown.

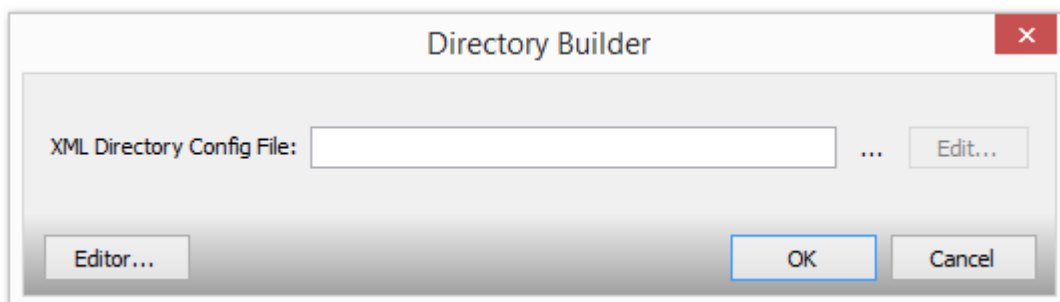
Once you have selected your app draw an area on your page where you would like to use the app.



The 'Settings' tab within the Toolbox will automatically open when the app is added to the page.

From here you can set your app up by clicking on the 'App Options' button.

### Understanding the App Options.



The configuration window allows you to choose the data file used to generate the directory. This file will be located in the project's media folder.

Pressing **Edit...** will launch the Directory Editor to edit the data file.

Pressing **Editor...** will launch the Directory Editor to create a new data file.

Often the data file will be exported directly from an existing database by the client. For this the data files will need to be created directly (see Appendix 1).

## 2. Using the Directory Builder Editor

The Editor allows you to create and edit Directory files used by the page app.

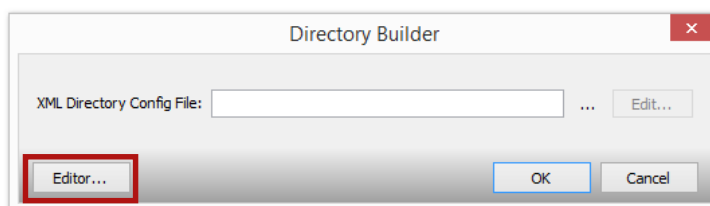
The page app displays an interactive animated directory. It allows items (e.g. shops) to be located by filtering through three levels (area and two categories). Each item can include a picture, description and other details. The item can optionally be shown in Google Maps and be assigned special offers.

The directory is defined in a special xml file. This Editor provides a user interface to edit directory files. They can also be created directly (see Appendix 1).

### Launching the Directory Builder Editor.

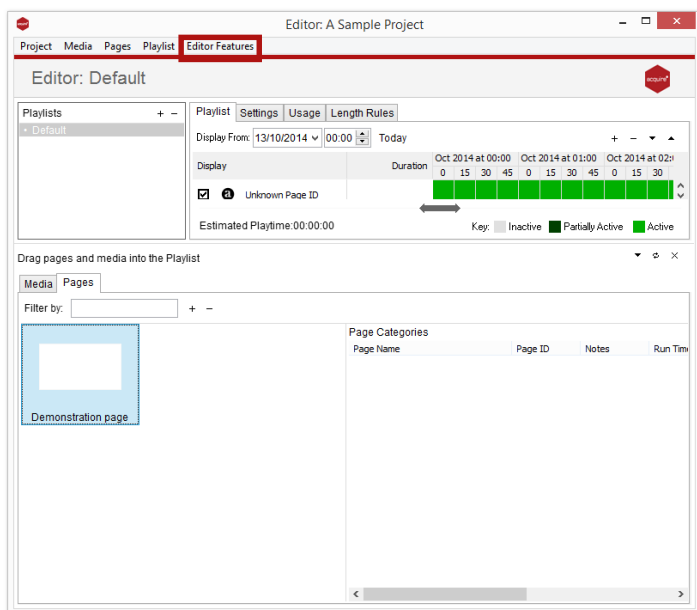
There are several ways to open the Editor.

1. From the page app settings window press on the **Editor** button to launch the Editor.

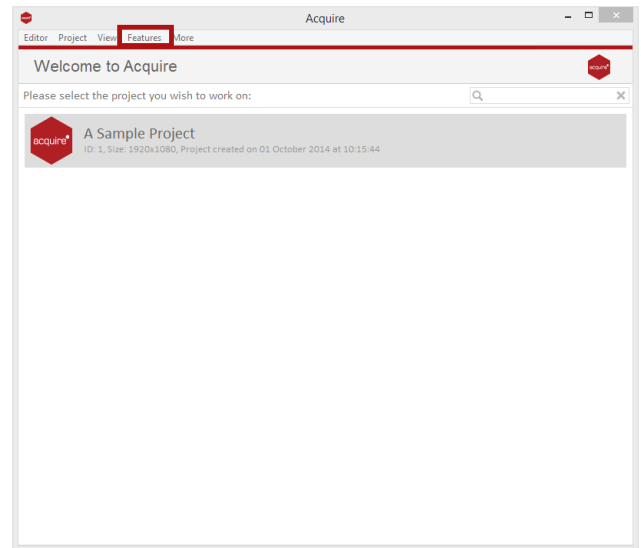


2. From the Acquire Editor screen click on the Editor Features tab and select the Directory Builder app from the menu.

You will be asked to select the project you wish to work on. Click on a project to launch the editor.



3. From the Welcome Screen click the Features tab and select the Directory Builder app. You will be prompted to select the project you wish to work on. Select a project to launch the Editor.



### Directory Builder - Editor Overview.

There are 6 tabs. Tabs 1-5 correspond to the Area, Activity, Type, Results and Description levels in the above example.

Preview button allows you to preview the Directory without having to exit the Editor.

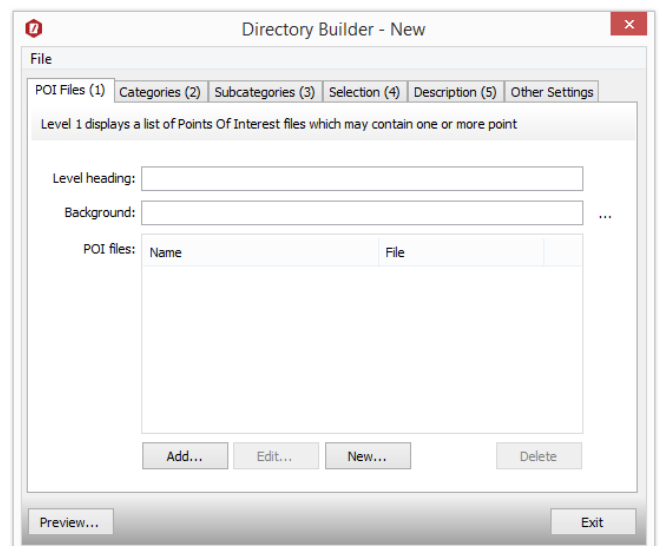
### POI Files (1) tab explained.

This first level contains a list of Points of Interest (POI). A single file can have multiple Points of Interest.

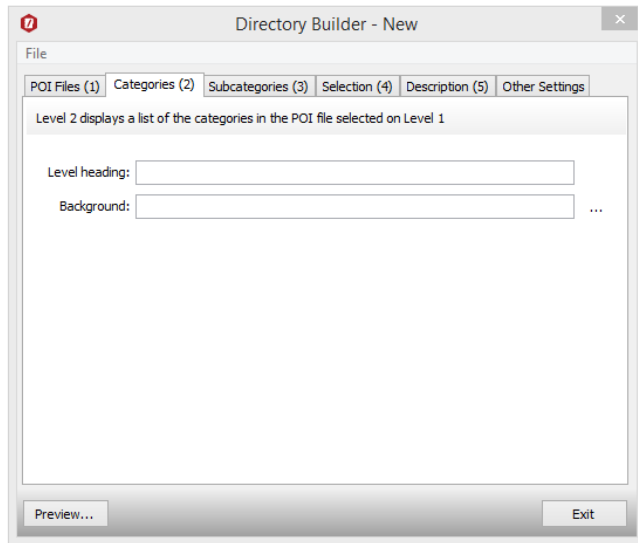
**Level Heading:** This is the text that will appear at the top of the level.

**Background Image:** Select the background image to be displayed at this level. The dimensions of the image will define the level's initial width but this can be changed.

**POI files:** Shows the list of POI files to show in this level.



## Categories (2) tab explained.



This will make up the second level and contains a list of the categories in the POI file that was selected in level one.

As before, you can set a heading (text to appear at this level) and set a background image.

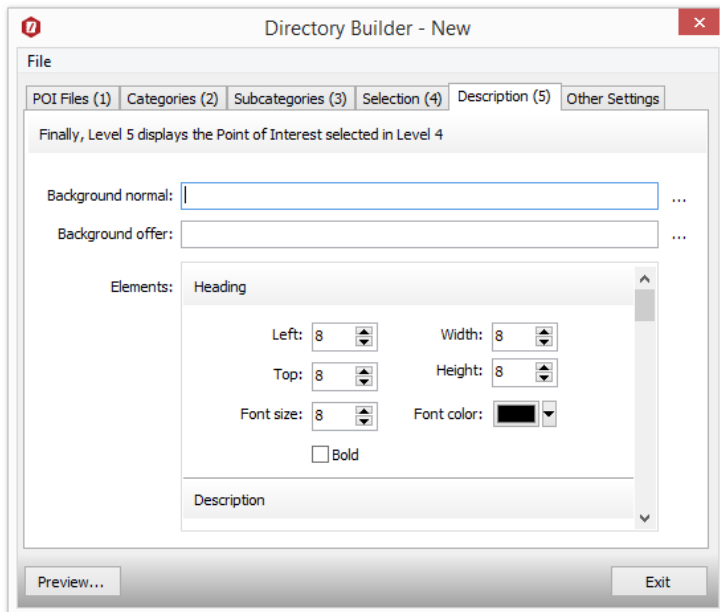
In the **Subcategories (3)** and **Selection (4)** set a level heading and background image as per the previous 2 tabs.

(refer to the example on page 2)



### Description (5) tab explained.

The fifth level displays the information for the POI selected in level four.



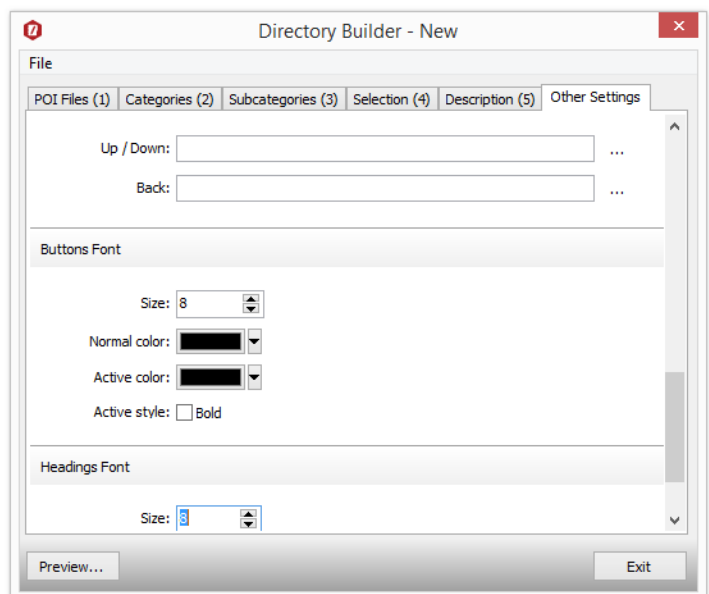
Here you can select an image for this selection when the item is 'normal' or when there is a special offer. For example a voucher or other promotion.

**Elements:** Use the options here to edit the position of the descriptions. You can change the font, colour and alignment.

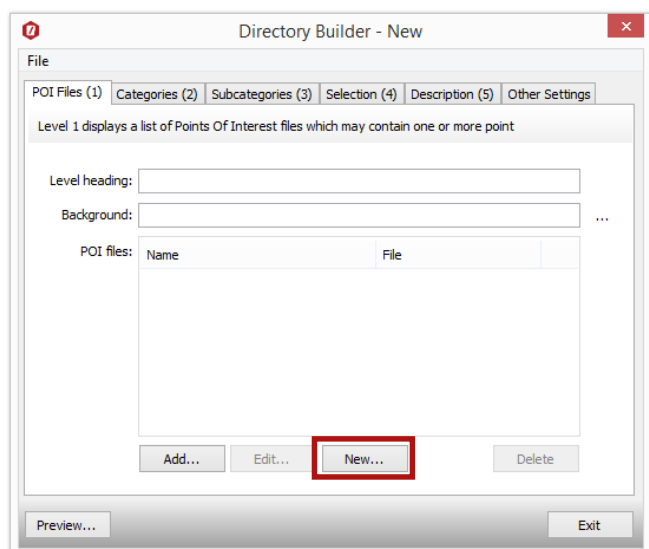
### Other Settings tab explained.

Here you can change the general settings of the directory which don't refer to any specific level.

You can set the appearance of text, buttons, offer buttons and headings fonts.



## POI file Editor explained.



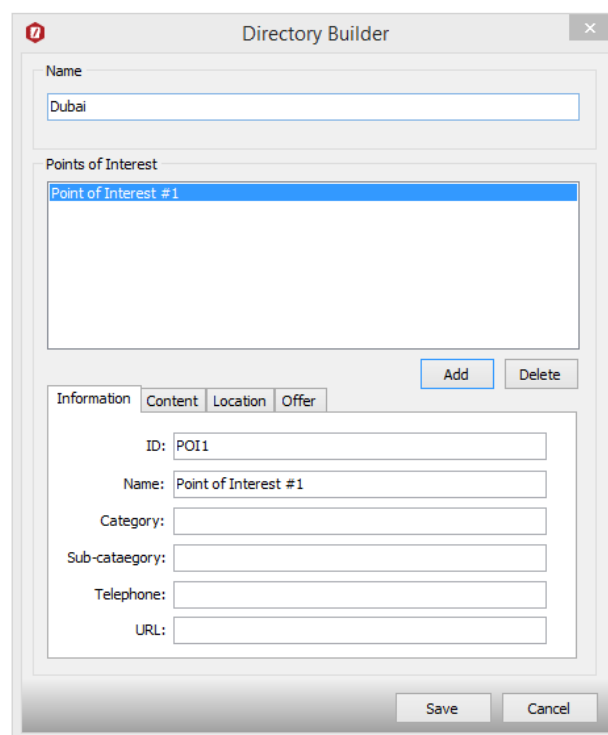
From the POI files (1) tab click **New...** to launch the POI file editor.

The POI editor will open.

Here you can add a POI name, information, content, location and offer in the tabs at the bottom. These will be shown at the results level of the directory if they match the user's category selections.

When adding an ID use the GPS page app to identify this record. It must be unique.

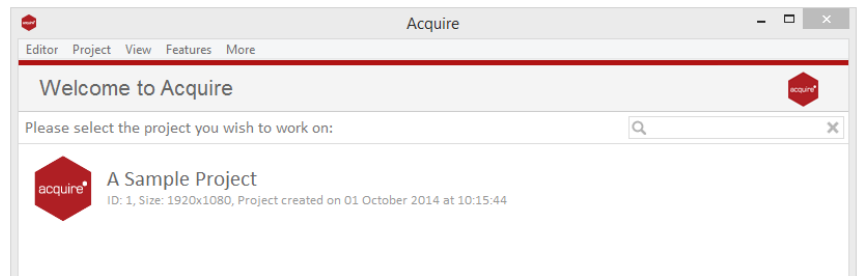
Once the information for the POI has been completed press the **save** button.



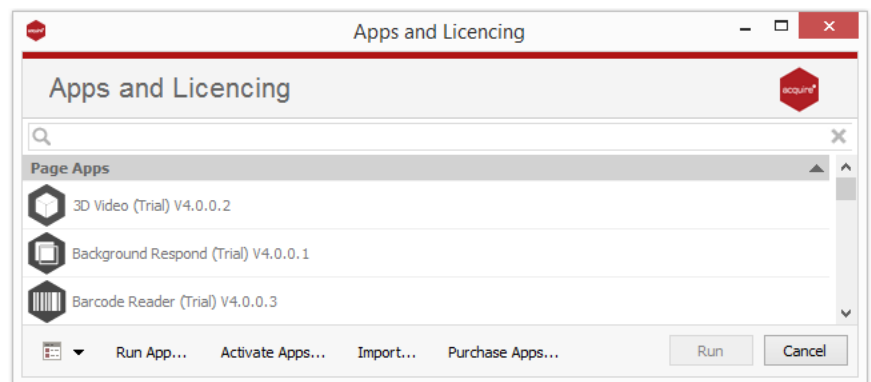
## Licencing apps.

On purchasing an app pack you will be provided with a licence key. Save this to your computer.

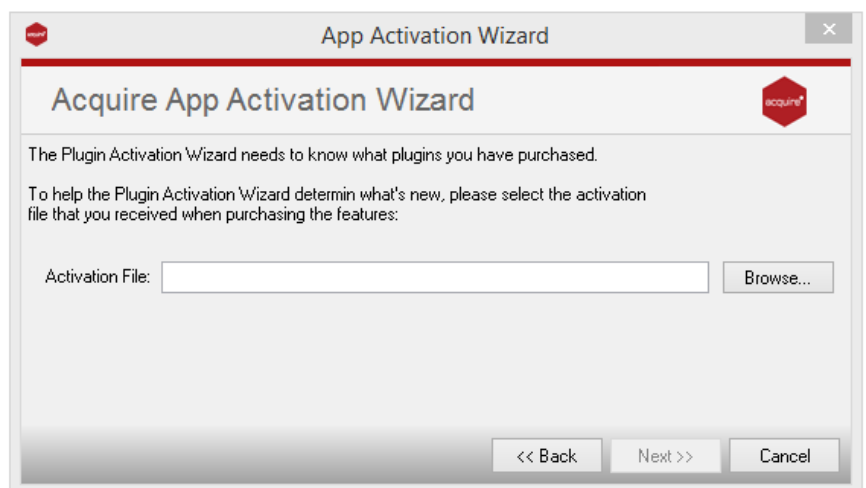
From the main 'Welcome Screen' click on *Editor* and select Apps and Licencing from the drop down menu.



Click *Activate Apps* and follow the onscreen instructions.



Use the 'Browse...' button to locate your saved licence key and follow the instructions to activate.



Your apps should now be activated and can be accessed from the apps list or from within a working project or project page.

## Appendix 1

### XML File Format

```

1      <?xml version="1.0" encoding="ISO-8859-1"?>
2      <viewer>
3          <poi mapvariable="$${poi}"
              mappage="Map"
              urlvariable="$${url}"
              urlpage="web"
              poifilevariable="$${poi}file">
4              <file>disneyarea.xml</file>
              <file>downtownorlando.xml</file>
              <file>internationaldrive.xml</file>
              <file>kissimmee.xml</file>
          </poi>
5          <menugfx background="Background.png"
              firstlevel="Button background 1.png"
              sublevel="Button background 2.png"
              sublevel2="Button background 2.png"
              sublevel3="Button background 2.png" />
6          <headings spacing="4"
              height="28"
              level1="Area"
              level2="Activity"
              level3="Type"
              level4="Results" />
7          <buttons>
              <normal off="Button NORM.png"
                  on="Button ROLL.png" />
              <offer off="Button with offer NORM.png"
                  on="Button with offer ROLL.png" />
              <other moreupdown="more.png"
                  back="Back to search.png" />
          </buttons>
8          <font name="Arial">
              <buttons fontsize="11"
                  boldwhenactive="-1"
                  normalcolor="16777215"
                  activecolor="16777215"
                  marginleft="8"
                  margintop="5"
                  marginright="10"
                  marginbottom="0"
                  omarginleft="8"
                  omargintop="5"
                  omarginright="34"
                  omarginbottom="0" />
              <headings size="12"
                  bold="-1"
                  color="16777215" />
              <details>
                  <heading size="18" bold="-1" color="0" />
                  <description size="10" bold="-1" color="0" />
                  <address size="10" bold="-1" color="0" />
                  <telephone size="14" bold="-1" color="0" />
                  <url size="8" bold="0" color="0" />
                  <offer>
                      <heading size="16" bold="-1" color="16777215" />
                      <content size="11" bold="-1" color="16777215"
                          highlightcolor="16239621" />
                  </offer>
              </details>
          </font>
9          <description>
              <background normal="details background.png"
                  offer="details offer background.png" />
              <image x="13" y="63" w="280" h="195"/>
              <heading x="10" y="10" w="280" h="20"/>

              <description x="340" y="60" w="440" h="160" />
              <address x="10" y="270" w="188" h="306" />

```

```
<telephone x="10" y="317" w="280" h="10"/>
<url x="10" y="330" w="500" h="10"/>
<offertitle x="330" y="274" w="430" h="300"/>
<offercontent x="330" y="304" w="430" h="374"/>
<mapbutton x="380" y="364" w="496" h="308"/>

</description>
</viewer>
```

Each line within the XML file is described below:

1. This is the XML DTD. This must exist at the start of all XML files.
2. This starts the main block of the XML file
3. This defines a *Points of Interest* file. This is used if you want to use the "Show on Map" option. When this happens the app will set some variables and jump to a page. The page should have the GPS page app on it and configured to use the POI file:
  - a. mapvariable: an acquire variable to write the POI ID to.
  - b. mappage: The acquire Page ID to jump to when the map button is clicked.
  - c. urlvariable: an acquire variable to write the POI url to
  - d. urlpage: The acquire Page ID to jump to whe the URL is clicked.
  - e. poifilevariable: A variable to which the relevant POI filename is saved to when the "show on map" option is selected. This is used because you can have more than one POI file in use at a time.
4. This is a list of POI XML files. See the next section for a description of the format of these files. Basic versions of these can be edited with the GPS page app. Each POI file defines a new top/first level category, thus for each file placed here one top level navigation entry will be created.
5. This section specifies the graphics that make up the menu.
  - a. background: The graphic to stretch to fill the background
  - b. firstlevel: The graphic shown behind the first level of navigation
  - c. sublevel: The graphic shown behind the second level of navigation
  - d. sublevel2: The graphic shown behind the third level of navigation
  - e. sublevel3: The graphic shown behind the final/results level of navigation.
6. This section describes the titles to show as headings for each sections in (5).
  - a. spacing:How much spacing (in pixels) to leave between each column
  - b. height: The height in pixels of the heading area.
  - c. level1: The title for the first level of navigation
  - d. level2: The title for the second level of navigation
  - e. level3: The title for the third level of navigation
  - f. level4: The title for the fourth/results navigation level
7. This section describes the graphics to show for the various types of button used by the four levels of navigation. For each the *off* state is the image to show when unselected and the *on* state is used when selected.
  - a. normal: Images to use for a normal button
  - b. offer: Images to use for a button when an offer is present in the POI data.
  - c. other:
    - i. moveupdown: A graphic used to provide up and down arrows for scrolling. The image is split in half horizontally. The left half causes a move down, the right half a move up.
    - ii. back: a graphic for a button that means *go back to results*.
8. Font section. This is used to describe the font settings used. The font name can only be chosen once and is specified here.
  - a. Buttons: Settings for each button used in the nav.
    - i. fontsize: Font size in pt.

- ii. **boldwhenactive**: if -7 then the text becomes bold when selected. Set to 0 to disable this option.
    - iii. **normalcolor**: Normal colour of the text.
    - iv. **activecolor**: Font colour when the button is selected.
    - v. **marginleft, marginright, margintop, marginbottom**: Used to offset where the text is displayed within the button image in pixels for a standard button.
    - vi. **omarginleft, omarginright, omargintop, omarginbottom**: Used to offset where the text is displayed within the button image in pixels for an offer style button.
  - b. **headings**: Used to specify the font size, bold state and colour of the text shown in the headings in the four levels of category/results.
  - c. **details**: This section describes how the details of each result are displayed when touched/clicked.
    - i. **heading**: Font settings for the heading
    - ii. **description**: Font settings for the description
    - iii. **address**: Font settings for the address (if it's a shop/venue etc)
    - iv. **telephone**: Font settings for a phone number if needed.
    - v. **offer**: Font settings for the heading and content text of an offer relating to this result.
9. **description**: This section specifies the background graphic to use when showing full details about an item. There are two, one for a normal item and one for when there is an offer. Also you can specify the position and dimensions of the various elements shown in the description.

## POI (Points of Interest) XML File Format

The XML file format of a POI file is as follows. The *Record* section can be repeated as many times as required.

```

1      <?xml version="1.0" encoding="ISO-8859-1"?>
2      <RecordSet name="CategoryName">
3          <Record>
4              <id>        unique id for this item    </id>
5              <category> Dining    </category>
6              <subcategory> Asian    </subcategory>
7              <name>      Name of Place    </name>
8              <description> Description of place </description>
9              <address>   Address of place  </address>
10             <telephone> Telephone Number  </telephone>
11             <url>       http://www.mysitewebsit.com/ </url>
12             <image>
13                 <file>   food.bmp    </file>
14                 <width>  267    </width>
15                 <height> 400    </height>
16             </image>
17             <offer>
18                 <title>FREE bottle of Wine</title>
19                 <content>when you buy 2 main meals
20                 Quote [ADVU0101] when you order</content>
21             </offer>
22
23             <lat>52.6348470097094</lat>
24             <lng>-1.20850682258606</lng>
25
26         </Record>
27     </RecordSet>

```

Each line within the XML file is described below:

1. This is the XML DTD. This must exist at the start of all XML files.
2. This starts the main block of the XML file. The text in the *name* section is shown in the top level of navigation in this app.
3. This defines the start of each record.
4. id: For the POI to work each item must have a unique ID. This can be any combination of numbers or letters as long as it is unique.
5. category: This is shown in the second level of navigation in the app.
6. subcategory: This is shown in the third level of navigation in the app.
7. name: This is the name of the item. This will appear in the fourth level of navigation.
8. description: Textual description of this item
9. address: Textual address of this item, if required.
10. telephone: Textual telephone number relating to this item.
11. url: A website url for this item if required.
12. image: Image relating to the item, for example a picture of a tourist attraction. The sub sections describe the filename and the dimensions of the picture in pixels.
13. offer: This *optional* section is used to tell the app about an offer relating to this item. You can specify a title and some content. Tip: any text placed within [] symbols will be shown in a highlighted colour.

14. Latitude of this item (if using with the GPS page app)
15. Longitude of this item (if using with the GPS page app)