



Background Respond App.



Revolutionising digital interaction.

Contents.

Introduction.....3

Uses.....3

Using Background Respond.3

Understanding the App Options.....4

Licensing apps.5

Introduction.

Background Respond can be used to achieve a heightened customer experience. It works by responding to a set of predefined rules to dynamically change the background image or colour automatically.

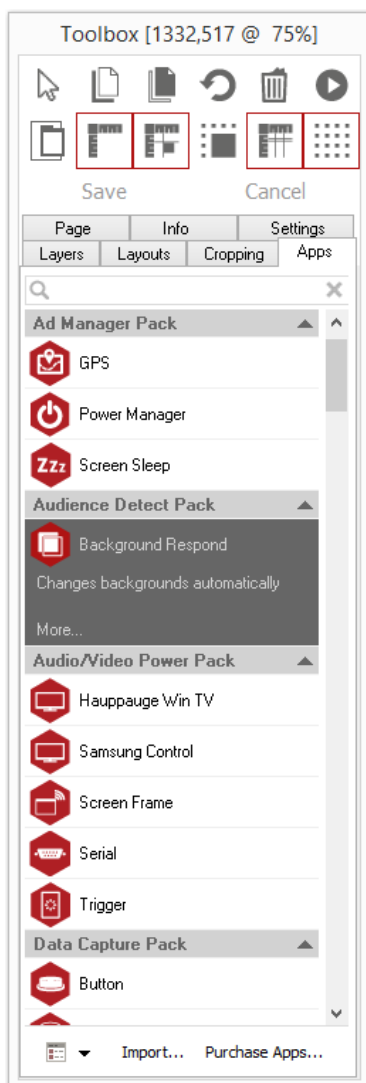
Uses.

Use the app to easily create interactive and responses projects. For example, if the end user makes a particular selection then the background can be triggered to respond by displaying a particular message or colour.

Background Respond can also be used with other third party software systems such as Nemo-Q to create advanced retail systems that can monitor serving times and stock levels. Background Respond will change the colour of a screen located in a managers office when Acquire detects low stock levels. The screen, for example, may turn red alerting staff to low-stock levels so that the problem can be dealt with quickly and efficiently.

Using Background Respond.

To access the app open an existing or new page and select the 'App' tab of page editor 'Toolbox' (shown below). Apps are grouped within their relevant app packs and are displayed red if they have been licenced. For more information about licensing apps go to [Licencing apps](#).

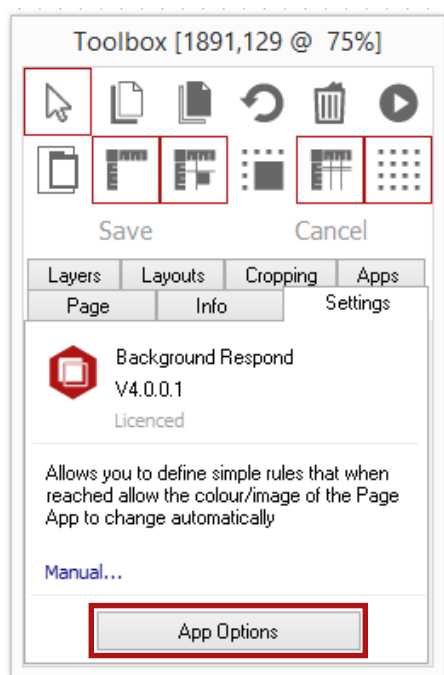


Select the app from the list. When an app is selected it will be highlighted as shown.

The Background Respond app is shown as selected here.

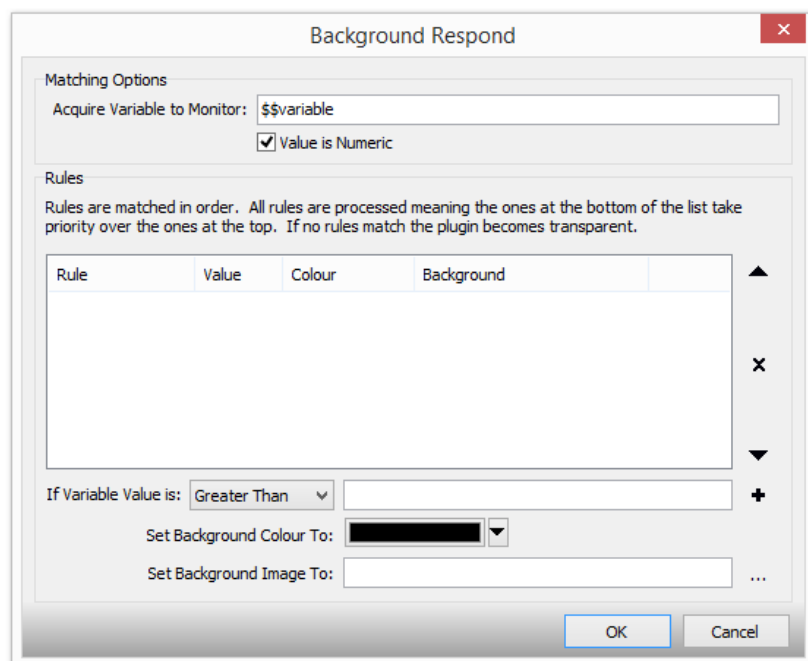
Once you have selected your app draw an area on your page where you would like to use the app.

The 'Settings' tab within the Toolbox will automatically open when the app is added to the page.



From here you can set your app up by going to 'App Options.'

Understanding the App Options.



Acquire Variable to Monitor.

Input variables that you wish to monitor. These are read periodically and checks for matches input by the user.

Value is Numeric.

Check this box if you want all text to be treated as numbers. Comparisons will be numeric rather than alphanumeric.

Rules.

In here the rules to process are listed. Each time the value of the variable changes the rules are processed from top to bottom. The last matching rule is the one that is applied.

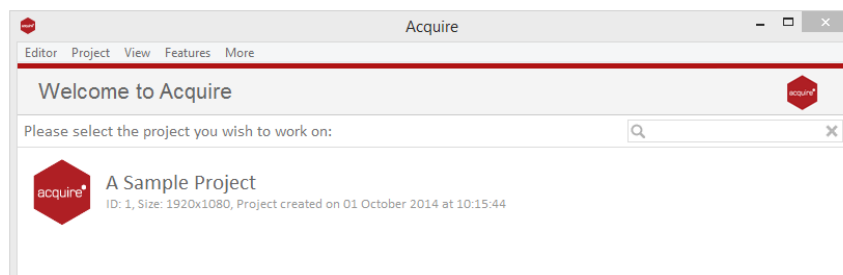
If the Variable is.

This section allows you to configure the rule choosing specific actions that you wish Acquire to carry out. You can choose an image to be displayed or set a background colour.

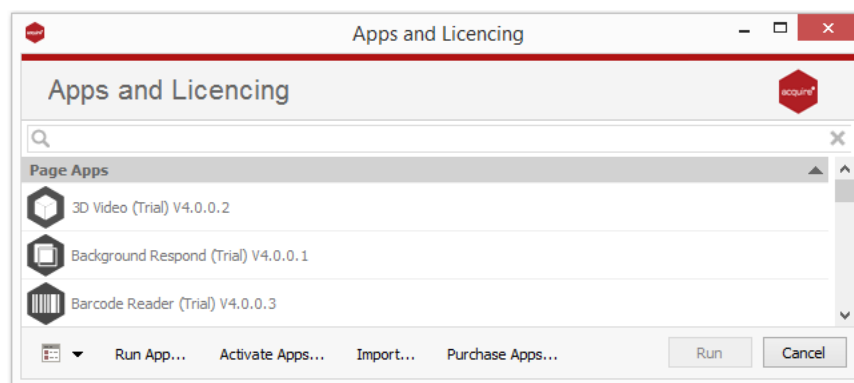
Licencing apps.

On purchasing an app pack you will be provided with a licence key. Save this to your computer.

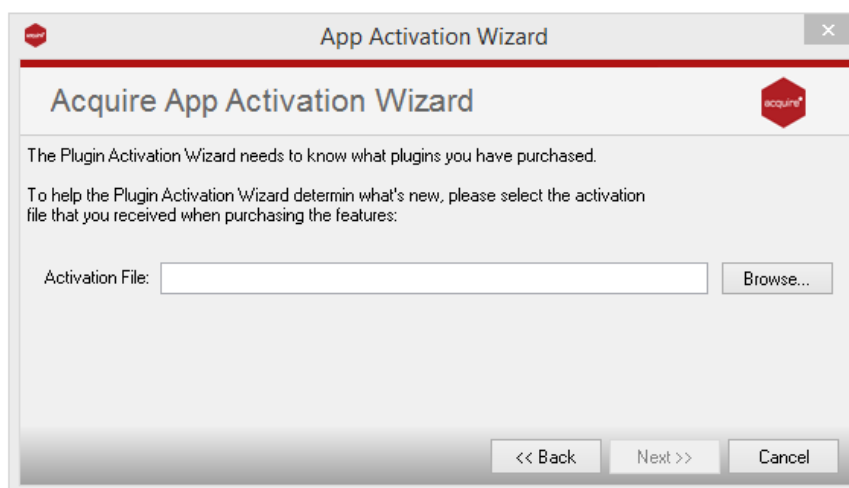
From the main 'Welcome Screen' click on *Editor* and select Apps and then Licencing from the drop down menu.



Click *Activate Apps* and follow the onscreen instructions.



Use the 'Browse...' button to locate your saved licence key and follow the instructions to activate.



Your apps should now be activated and can be accessed from the apps list or from within a working project or project page.